

This drawing is confidential and must not be reproduced or used without the consent of EXM

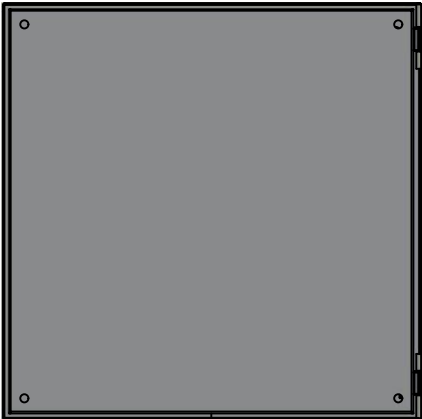
Tolerance ±1/32" unless otherwise specified

C:\Vault Workspace\Inventor Dwg\BoxCad\Result\1100202010\1100202010.idw

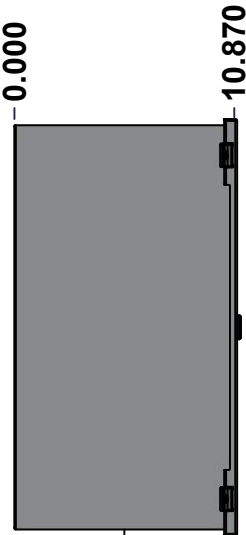
Tolérance ±1/32" sauf spécification contraire



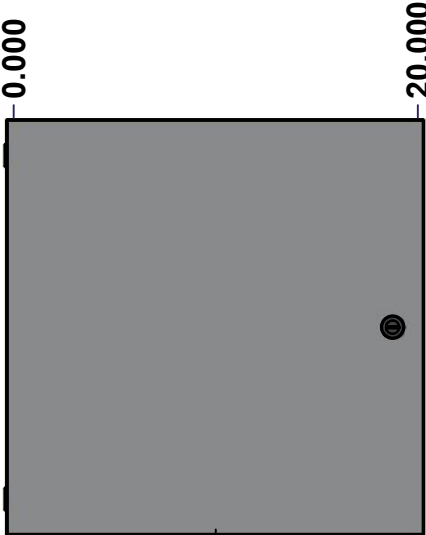
TOP



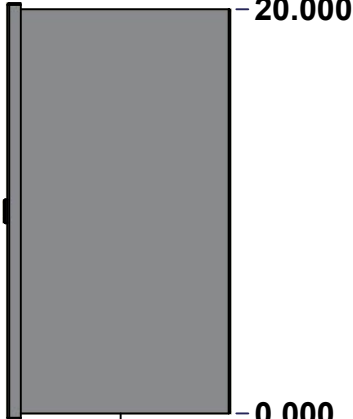
BACK



LEFT



FRONT

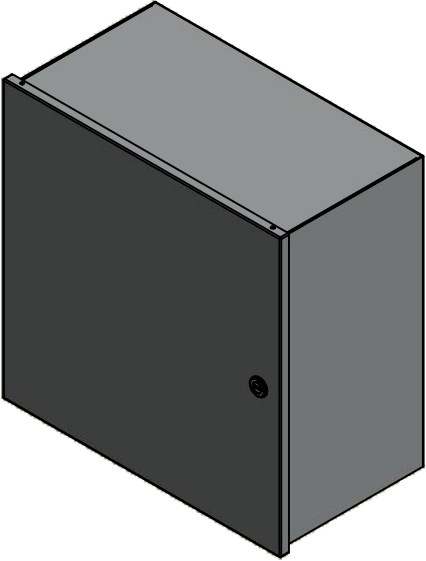


RIGHT

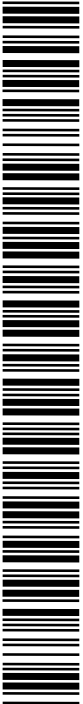



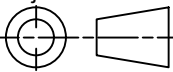
BOTTOM

No.	Revisions	Date	By/Par



Isometric View



 <div>Tél: (450) 979-4373 Fax: (450) 979-4626 www.exmweb.com</div>		Flatness Aplatissement Max 3.0mm	
		Projection 	
Customer Client		Date	
Drawn By Dessiné Par		Date 12/25/2013	
Material Matière		16 Ga Cold Rolled A1008 CS Type B (1.4mm)	
Color Couleur		Asa-61 Grey	Finish Fini Smooth
Description 1100 20" x 20" x 10.87" Assembly			Detail Rev.
Part Number Numéro Pièce			Rev. 1
SEE BILL OF MATERIAL ON LAST PAGE 1100202010			0 9

This drawing is confidential and must not be reproduced or used without the consent of EXM

Tolerance ±1/32" unless otherwise specified

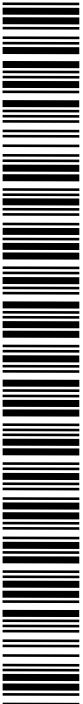
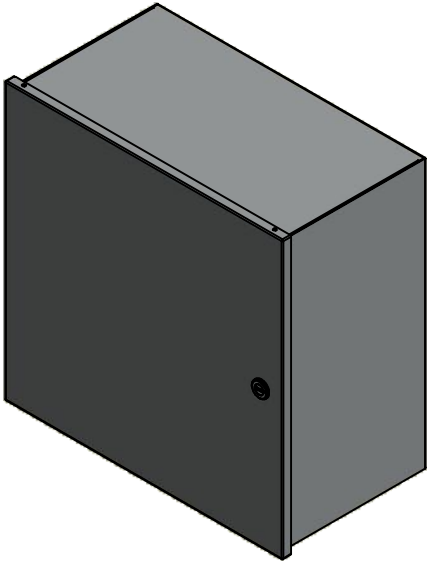
C:\Vault Workspace\Inventor Dwg\BoxCad\Result\1100202010\1100202010.idw

Tolérance ±1/32" sauf spécification contraire

NOTE	
ITEM	DESCRIPTION
1	NEMA 1 Enclosure
2	C/W Standard ground studs on box and cover
3	W/O Standard door stiffener
4	W/O Inner panel
5	C/W Standard inner panel mounting studs

No.	Revisions	Date	By/Par

Ce dessin est confidentiel et ne doit pas être reproduit ou utilisé sans le consentement de EXM



Isometric View

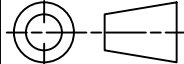


Tél: (450) 979-4373
Fax: (450) 979-4626
www.exmweb.com

Flatness
Aplatissement

Max 3.0mm

Projection



Customer Client		Date
Drawn By Dessiné Par BoxCad: BoxCad		Date 12/25/2013
Material Matière 16 Ga Cold Rolled A1008 CS Type B (1.4mm)		
Color Couleur Asa-61 Grey	Finish Fini Smooth	

PACKING		
ITEM	QTY	DESCRIPTION
Cardboard sleeve	1	Top
Thermal plastic film	1	Use with Packing Tunnel Wrapper Machine
Packaging label	1	White label with product number

1	1100202010C	0	1100 20" x 20" Cover
1	1100202010B	0	1100 20" x 20" x 10.87" Body
2	STK-Q-08100	1	M5 Nylon Insert Lock Nut
Qty	Part Number	Rev	Description
Parts List			

Description 1100 20" x 20" x 10.87" Assembly		Detail Rev.	
Part Number Numéro Pièce 1100202010		Rev. 0	2 9

This drawing is confidential and must not be reproduced or used without the consent of EXM

Tolerance ±1/32" unless otherwise specified

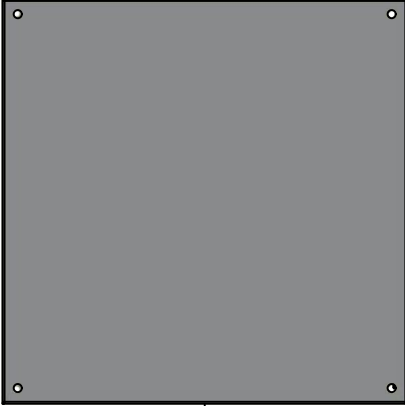
C:\Vault Workspace\Inventor Dwg\BoxCad\Result\1100202010\1100202010.idw

Tolérance ±1/32" sauf spécification contraire

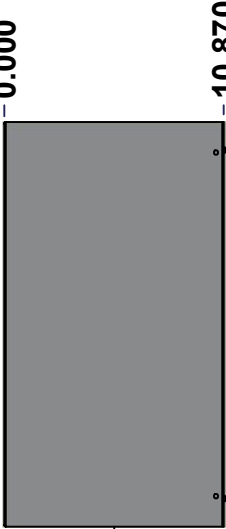
Ce dessin est confidentiel et ne doit pas être reproduit ou utilisé sans le consentement de EXM



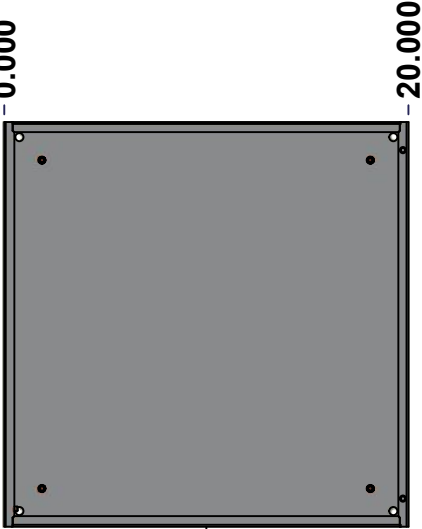
TOP



BACK



LEFT



FRONT

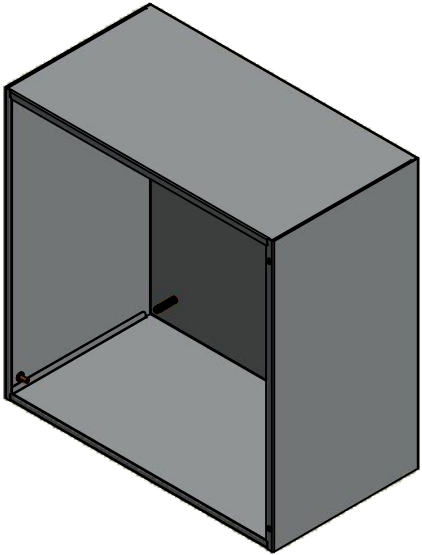


RIGHT



BOTTOM

No.	Revisions	Date	By/Par



Isometric View

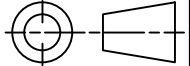


Tél: (450) 979-4373
Fax: (450) 979-4626
www.exmweb.com

Flatness
Aplatissement

Max 3.0mm

Projection



Customer Client		Date	
Drawn By Dessiné Par		Date 12/25/2013	
Material Matière		16 Ga Cold Rolled A1008 CS Type B (1.4mm)	
Color Couleur		Asa-61 Grey	Finish Finis Smooth
Description 1100 20" x 20" x 10.87" Body			Detail Rev.
Part Number Numéro Pièce		Rev.	3
1100202010B		0	9

SEE BILL OF MATERIAL ON LAST PAGE

This drawing is confidential and must not be reproduced or used without the consent of EXM

Tolerance ±1/32" unless otherwise specified

C:\Vault Workspace\Inventor Dwg\BoxCad\Result\1100202010\1100202010.idw

Tolérance ±1/32" sauf spécification contraire

STANDARD FEATURES ARE NOT LISTED IN THIS HOLE TABLE			
HOLE TABLE - LEFT VIEW (CUSTOM FEATURE ONLY)			
CUT-OUT	XDIM	YDIM	DESCRIPTION
1	9.807	0.875	GND STUD M6 x 16mm (Inside)



	Description	Status	
	1100 20" x 20" x 10.87" Body	(NULL)	
	Part Number	Rev.	4
	Numéro Pièce	0	9
1100202010B			

Ce dessin est confidentiel et ne doit pas être reproduit ou utilisé sans le consentement de EXM

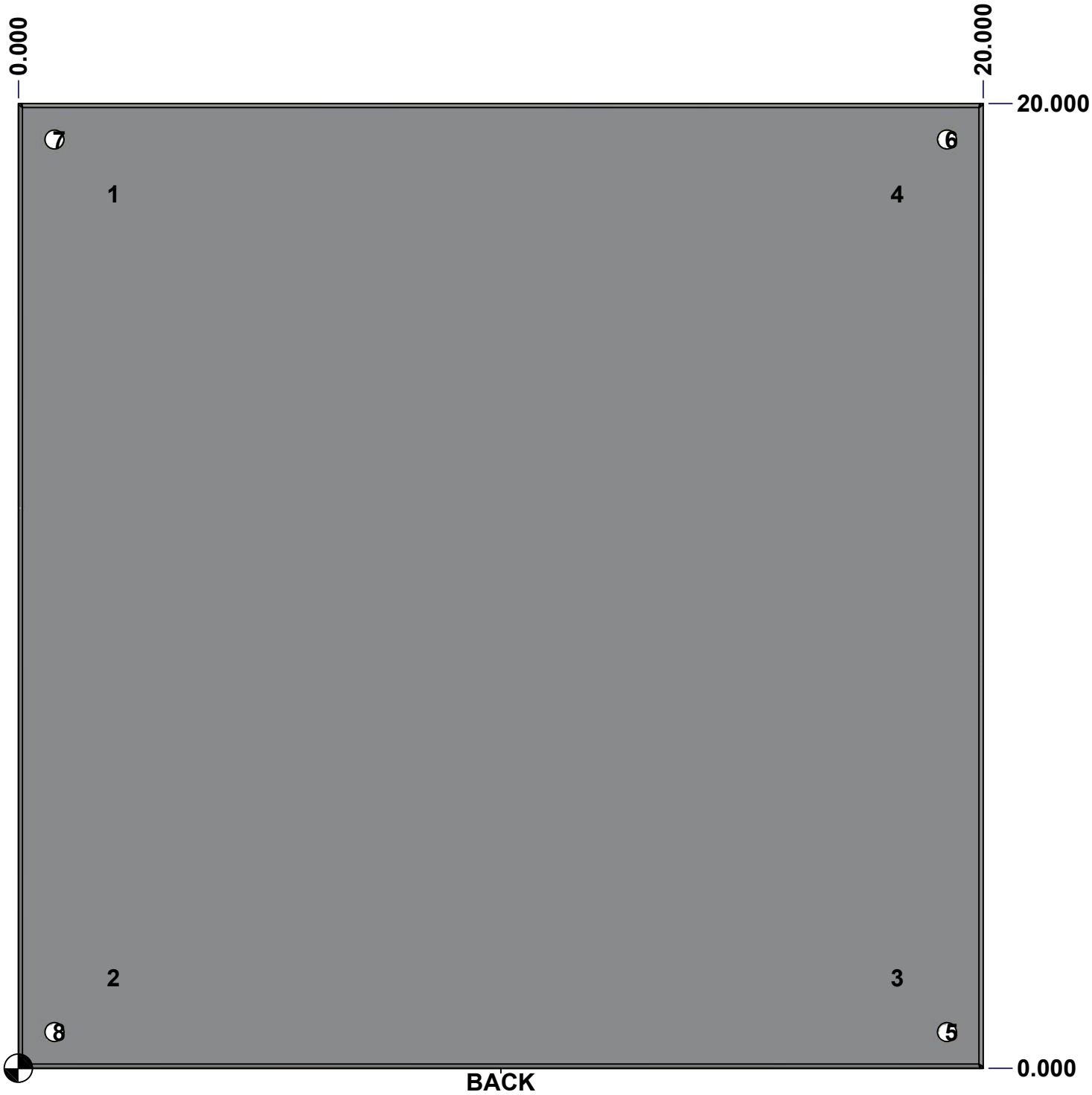
This drawing is confidential and must not be reproduced or used without the consent of EXM

Tolerance ±1/32" unless otherwise specified

C:\Vault Workspace\Inventor Dwg\BoxCad\Result\1100202010\1100202010.idw

Tolérance ±1/32" sauf spécification contraire

STANDARD FEATURES ARE NOT LISTED IN THIS HOLE TABLE			
HOLE TABLE - BACK VIEW (CUSTOM FEATURE ONLY)			
CUT-OUT	XDIM	YDIM	DESCRIPTION
1	1.875	18.125	IP STUD M8 x 35mm (Inside)
2	1.875	1.875	IP STUD M8 x 35mm (Inside)
3	18.125	1.875	IP STUD M8 x 35mm (Inside)
4	18.125	18.125	IP STUD M8 x 35mm (Inside)
-----	-----	-----	-----
5	19.250	0.750	RND Ø0.390
6	19.250	19.250	RND Ø0.390
7	0.750	19.250	RND Ø0.390
8	0.750	0.750	RND Ø0.390



	Description 1100 20" x 20" x 10.87" Body	Status (NULL)	
	Part Number Numéro Pièce 1100202010B	Rev. 0	5 9

Ce dessin est confidentiel et ne doit pas être reproduit ou utilisé sans le consentement de EXM

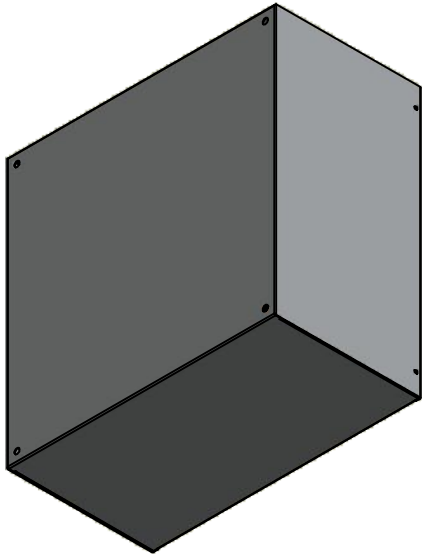
This drawing is confidential and must not be reproduced or used without the consent of EXM

Tolerance ±1/32" unless otherwise specified


C:\Vault Workspace\Inventor Dwg\BoxCad\Result\1100202010\1100202010.idw


Tolérance ±1/32" sauf spécification contraire

No.	Revisions	Date	By/Par



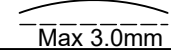
Isometric View





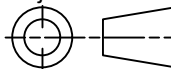
Tél: (450) 979-4373
Fax: (450) 979-4626
www.exmweb.com

Flatness
Aplatissement



Max 3.0mm

Projection



Customer
Client

Date

Drawn By
Dessiné Par

BoxCad: BoxCad

Date 12/25/2013

Material
Matière

16 Ga Cold Rolled A1008 CS Type B (1.4mm)

Color
Couleur

Asa-61 Grey

Finish
Fini

Smooth

Description

1100 20" x 20" x 10.87" Body

Detail Rev.

Part Number
Numéro Pièce

1100202010B

Rev.

0

6
9

Qty	Part Number	Rev	Description
1	STK-Q-16080	0	Ground Stud M6 x 16mm
1	1100202010B-P	0	1100 20" x 20" x 10.87" Body Part
1	STK-P-02400S	0	Powder Paint (Asa-61 Grey / Smooth)
2	STK-Q-77110	1	5412 ES Cover Plastic Plug
4	STK-Q-16005	1	Stud M8 x 35 (No Paint Cap Required)
Parts List			

This drawing is confidential and must not be reproduced or used without the consent of EXM

Tolerance ±1/32" unless otherwise specified

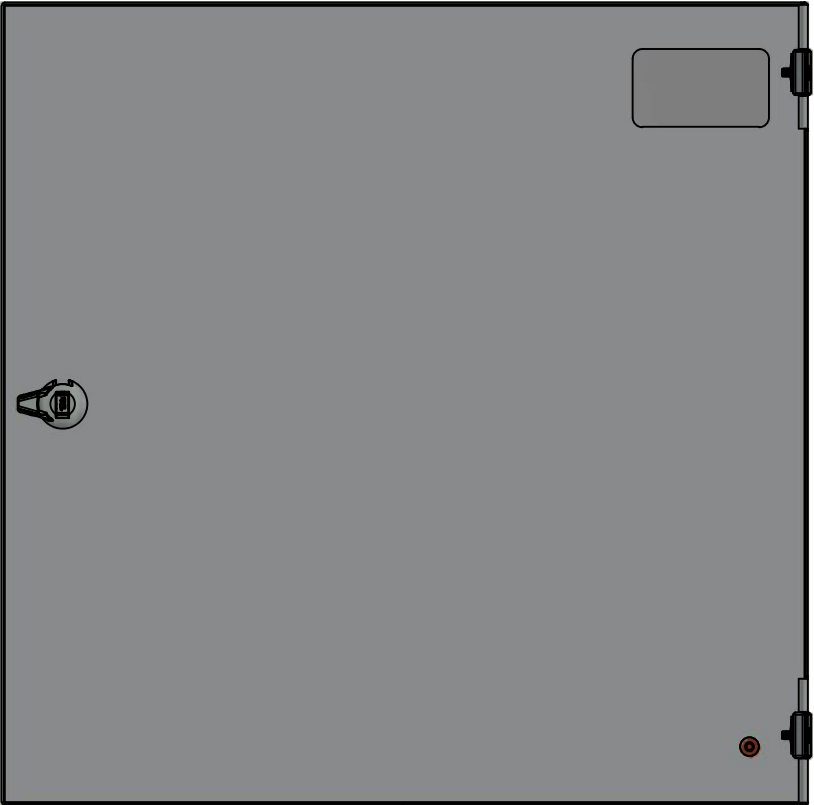
C:\Vault Workspace\Inventor Dwg\BoxCad\Result\1100202010\1100202010.idw

Tolérance ±1/32" sauf spécification contraire

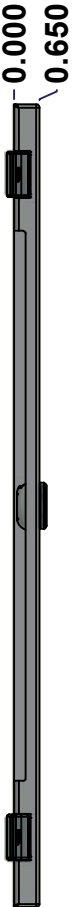
Ce dessin est confidentiel et ne doit pas être reproduit ou utilisé sans le consentement de EXM



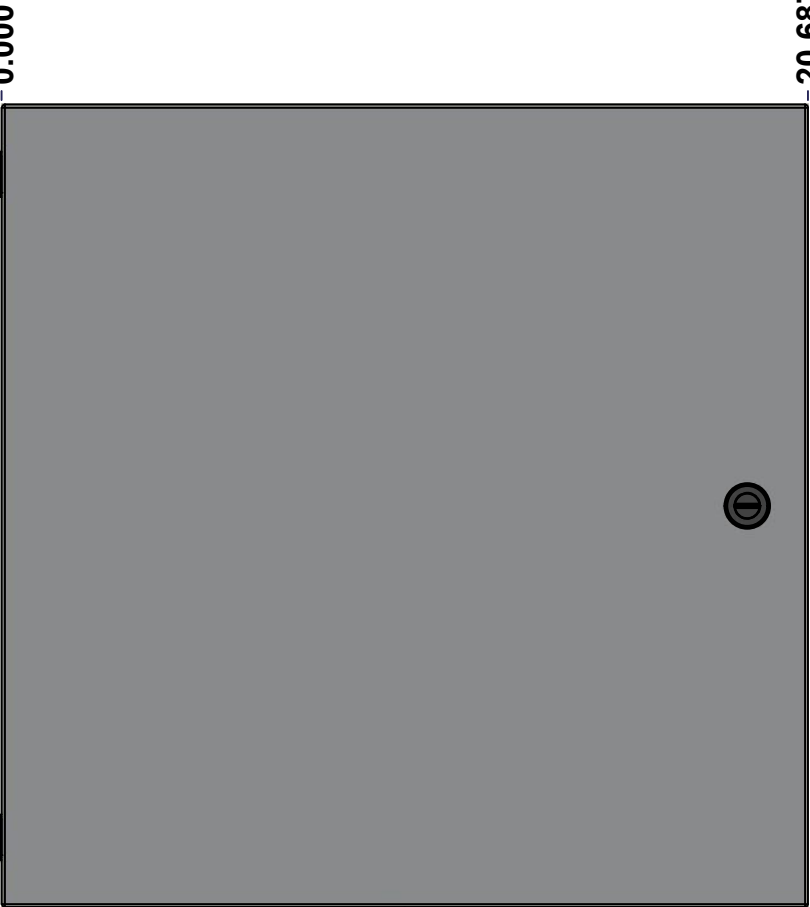
TOP



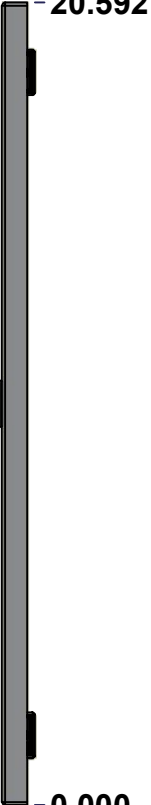
BACK



LEFT



FRONT

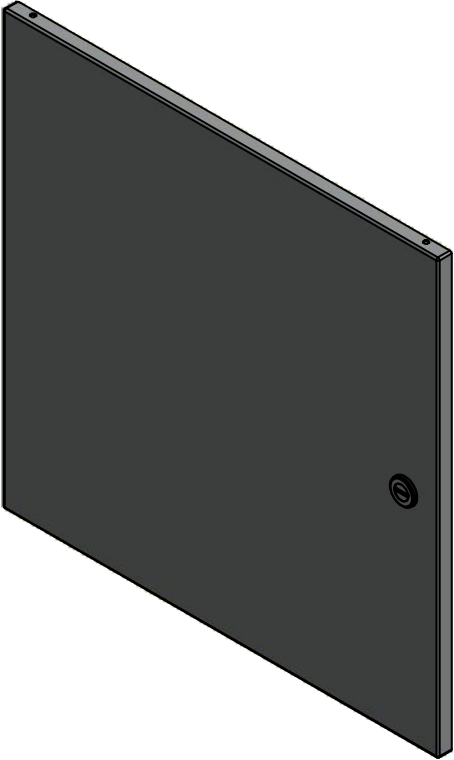


RIGHT

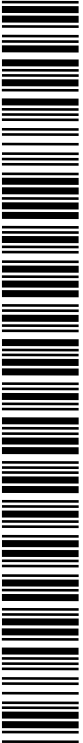


BOTTOM

No.	Revisions	Date	By/Par



Isometric View

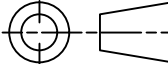


Tél: (450) 979-4373
Fax: (450) 979-4626
www.exmweb.com

Flatness
Aplatissement

Max 3.0mm

Projection



Customer Client		Date	
Drawn By Dessiné Par		Date 12/25/2013	
Material Matière		16 Ga Cold Rolled A1008 CS Type B (1.4mm)	
Color Couleur		Asa-61 Grey	Finish Fini Smooth
Description 1100 20" x 20" Cover			Detail Rev.
Part Number Numéro Pièce			Rev. 7
1100202010C			0 9

SEE BILL OF MATERIAL ON LAST PAGE

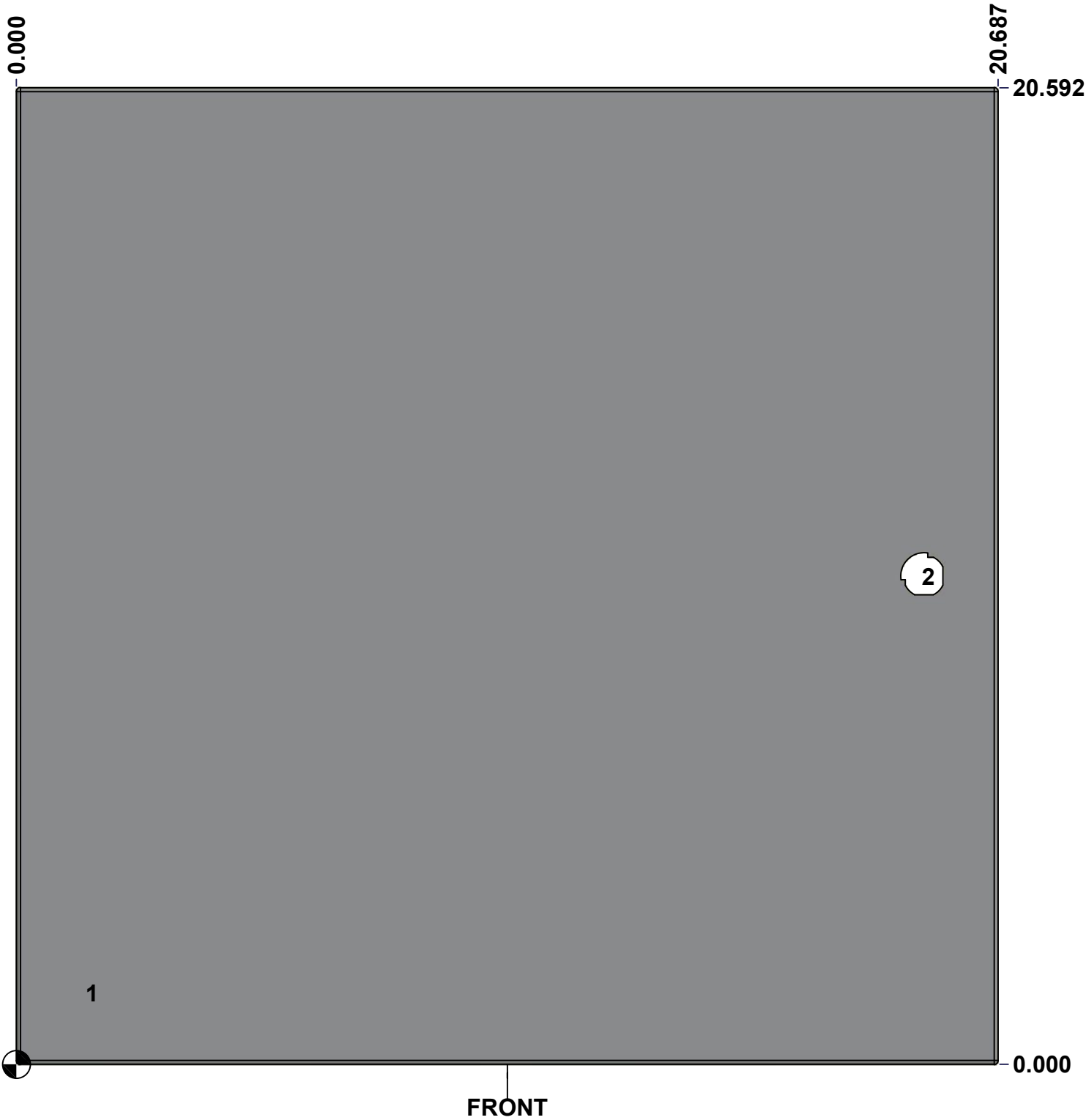
This drawing is confidential and must not be reproduced or used without the consent of EXM

Tolerance ±1/32" unless otherwise specified

C:\Vault Workspace\Inventor Dwg\BoxCad\Result\1100202010\1100202010.idw

Tolérance ±1/32" sauf spécification contraire

STANDARD FEATURES ARE NOT LISTED IN THIS HOLE TABLE			
HOLE TABLE - FRONT VIEW (CUSTOM FEATURE ONLY)			
CUT-OUT	XDIM	YDIM	DESCRIPTION
1	1.500	1.500	GND STUD M6 x 16mm (Inside)
2	19.125	10.296	LOCK 880 SCQ1-SLZ @ 0.0°



	Description	Status	
	1100 20" x 20" x 10.87" Cover	(NULL)	
	Part Number	Rev.	8
	Numéro Pièce	0	9
1100202010C			

Ce dessin est confidentiel et ne doit pas être reproduit ou utilisé sans le consentement de EXM

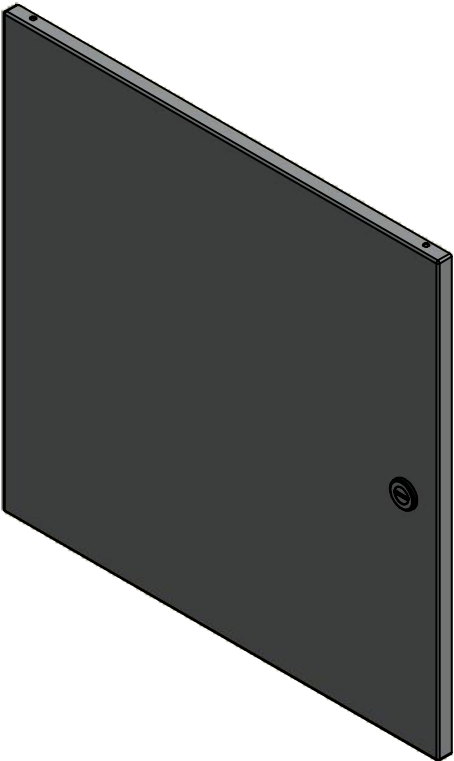
This drawing is confidential and must not be reproduced or used without the consent of EXM

Tolerance ±1/32" unless otherwise specified

C:\Vault Workspace\Inventor Dwg\BoxCad\Result\1100202010\1100202010.idw

Tolérance ±1/32" sauf spécification contraire

No.	Revisions	Date	By/Par



Isometric View

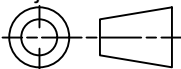


Tél: (450) 979-4373
Fax: (450) 979-4626
www.exmweb.com

Flatness
Aplatissement

Max 3.0mm

Projection



Customer Client	Date
Drawn By Dessiné Par	Date 12/25/2013
BoxCad: BoxCad	
Material Matière	16 Ga Cold Rolled A1008 CS Type B (1.4mm)

Color Couleur	Asa-61 Grey	Finish Fini	Smooth
------------------	-------------	----------------	--------

Description	Detail Rev.
1100 20" x 20" Cover	

Part Number Numéro Pièce	Rev.	9
1100202010C	0	9

1	880 SCQ1-SLZ	0	1100 1/4 Turn Lock
1	STK-Q-16080	0	Ground Stud M6 x 16mm
1	STK-S-00100	0	3.5" x 2" Silver Milar Flexcon Sticker
1	STK-P-02400S	0	Powder Paint (Asa-61 Grey / Smooth)
1	1100202010C-P	0	1100 20" x 20" x 10.87" Cover Part
2	STK-A-33033	4	5412 ESMCH Hinge
Qty	Part Number	Rev	Description
Parts List			

Ce dessin est confidentiel et ne doit pas être reproduit ou utilisé sans le consentement de EXM