

This drawing is confidential and must not be reproduced or used without the consent of EXM

Tolerance ±1/32" unless otherwise specified

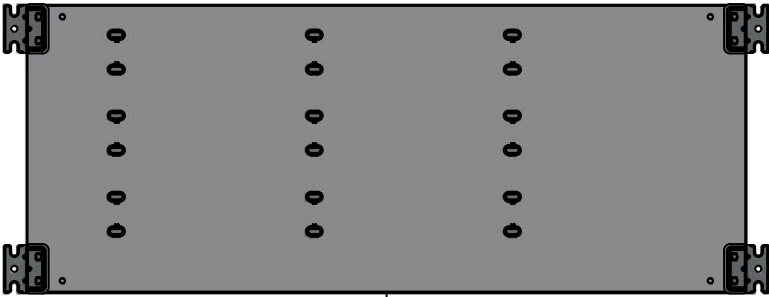
C:\Vault Workspace\Inventor Dwg\BoxCad\Result\1100BT05603\1100BT05603.idw

Tolérance ±1/32" sauf spécification contraire

Ce dessin est confidentiel et ne doit pas être reproduit ou utilisé sans le consentement de EXM



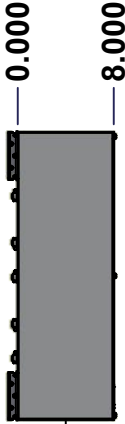
TOP



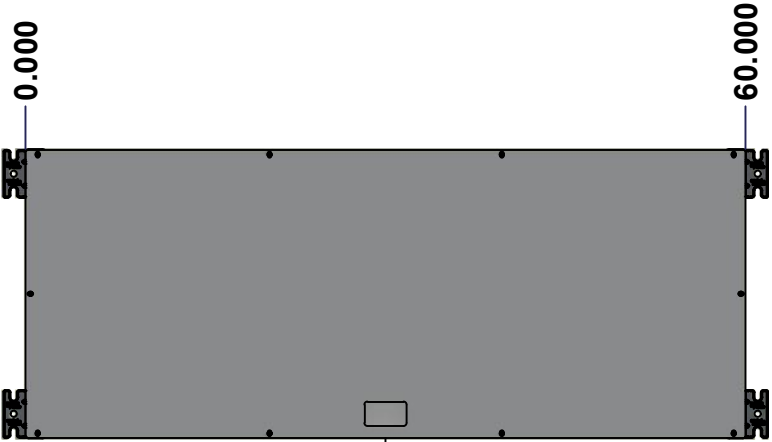
BACK



BOTTOM



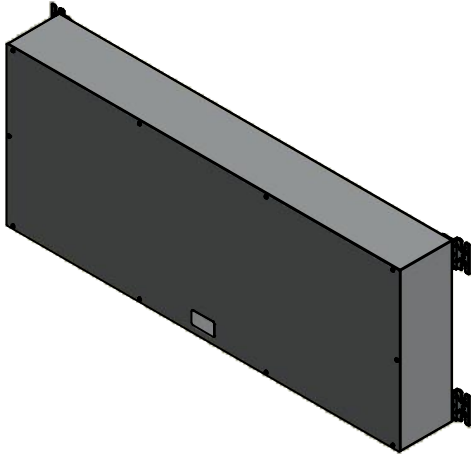
LEFT



FRONT



RIGHT



Isometric View

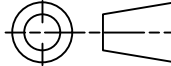


Tél: (450) 979-4373
Fax: (450) 979-4626
www.exmweb.com

Flatness
Aplatissement

Max 3.0mm

Projection



Customer Client

Date

Drawn By
Dessiné Par BoxCad: BoxCad

Date 7/25/2022

Material Matière 14 Ga Cold Rolled A1008 CS Type B (1.7mm)

Color Couleur Asa-61 Grey

Finish Fini Smooth

Description
1100BT 600A - 3Wires x 60" Assembly

Detail Rev.

Part Number
Numéro Pièce
1100BT05603

Rev. 0
1
8

SEE BILL OF MATERIAL ON LAST PAGE

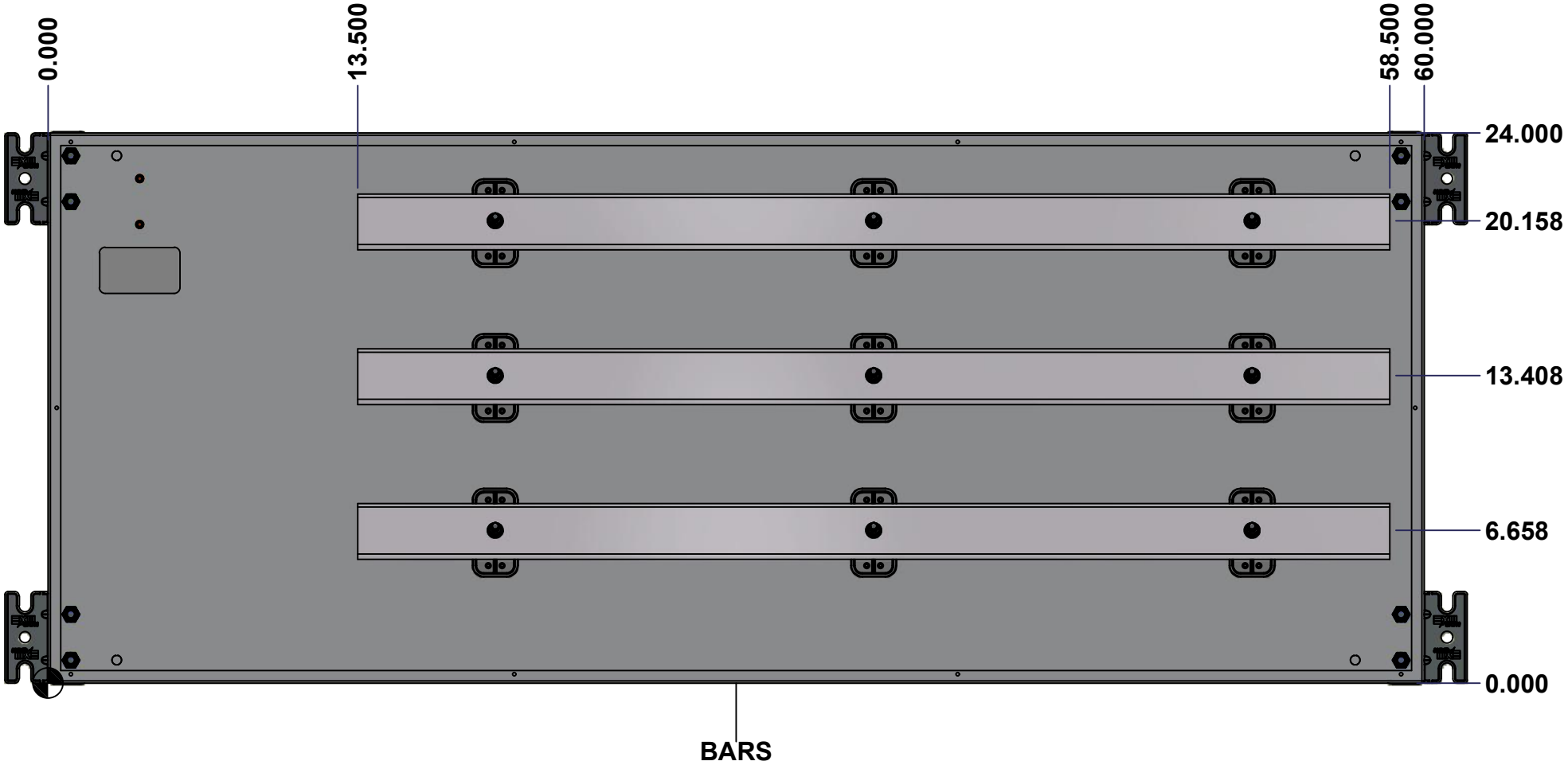
This drawing is confidential and must not be reproduced or used without the consent of Eurobex

Tolerance $\pm 1/32$ " unless otherwise specified

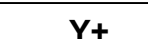
C:\Vault Workspace\Inventor Dwg\BoxCad\Result\1100BT05603\1100BT05603.idw

Tolérance $\pm 1/32$ " sauf spécification contraire

STANDARD FEATURES ARE NOT LISTED IN THIS HOLE TABLE



Ce dessin est confidentiel et ne doit pas être reproduit ou utilisé sans le consentement de Eurobex

	Description		Status	
	1100BT 600A - 3Wires x 60" Assembly		(NULL)	
	Part Number Numéro Pièce		Rev.	2
	1100BT05603		0	8

This drawing is confidential and must not be reproduced or used without the consent of EXM

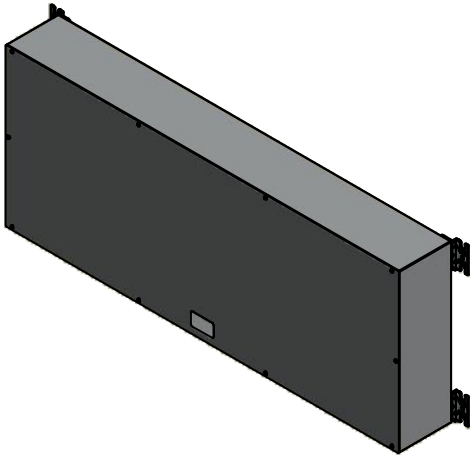
Tolerance $\pm 1/32"$ unless otherwise specified

C:\Vault Workspace\Inventor Dwg\BoxCad\Result\1100BT05603\1100BT05603.idw

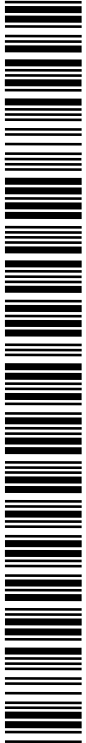
Tolérance $\pm 1/32"$ sauf spécification contraire

NOTE	
ITEM	DESCRIPTION
1	NEMA 1 Enclosure
2	C/W Standard ground studs on box and cover
3	W/O Standard door stiffener
4	W/O Inner panel
5	W/O Inner panel mounting studs

No.	Revisions	Date	By/Par



Isometric View

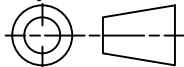


Tél: (450) 979-4373
Fax: (450) 979-4626
www.exmweb.com

Flatness
Aplatissement

Max 3.0mm

Projection



Customer
Client

Date

Drawn By
Dessiné Par

BoxCad: BoxCad

Date 7/25/2022

Material
Matière

14 Ga Cold Rolled A1008 CS Type B (1.7mm)

Color

Asa-61 Grey

Finish

Smooth

Description

1100BT 600A - 3Wires x 60" Assembly

Part Number
Numéro Pièce

1100BT05603

Rev.

3

0

8

PACKING		
ITEM	QTY	DESCRIPTION
Cardboard sleeve	2	Top and Bottom
Cardboard strip	2	Between back of enclosure and inner panel
Plastic bag	1	To protect cover surface and inside gasket
Cardboard corner	4	To reinforced for the plastic strap tightening
Plastic strap - Black	2	To Squeeze 2 cardboard sleeve together
Packaging label	3	White label with PN
Plastic strap- Green	2	To secure the enclosure to the wood pallet
Wood Pallet	1	2" deeper and 3" larger than enclosure size

2	885 BTMF	0	885 BTMF Mounting Feet Kit
1	1100BT05603BAR2-P	0	Rounded Edge Aluminum Bar 3/8" x 2 1/2"
1	1100BT05603BAR1-P	0	Rounded Edge Aluminum Bar 3/8" x 2 1/2"
1	1100BT05603BAR3-P	0	Rounded Edge Aluminum Bar 3/8" x 2 1/2"
9	STK-Q-07310	2	Flange Lock Nut M8
9	STK-A-67400	0	Buss Bar Insulator Kit
10	STK-Q-05020	5	M5 x 8mm Thread Rolling Screw
1	1100BT05603C	0	1100BT 24" x 60" Cover
1	1100BT05603B	0	1100BT 24" x 60" x 8" Body
Qty	Part Number	Rev	Description
Parts List			

This drawing is confidential and must not be reproduced or used without the consent of EXM

Tolerance ±1/32" unless otherwise specified

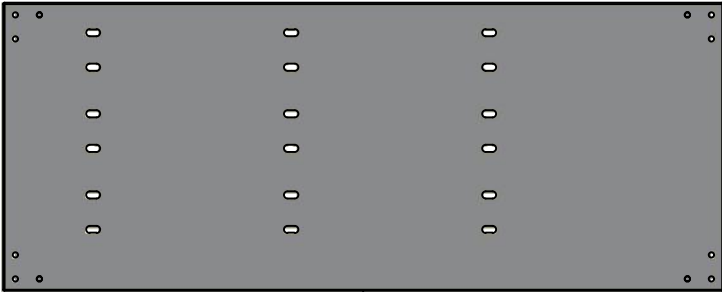
C:\Vault Workspace\Inventor Dwg\BoxCad\Result\1100BT05603\1100BT05603.idw

Tolérance ±1/32" sauf spécification contraire

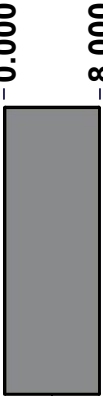
Ce dessin est confidentiel et ne doit pas être reproduit ou utilisé sans le consentement de EXM



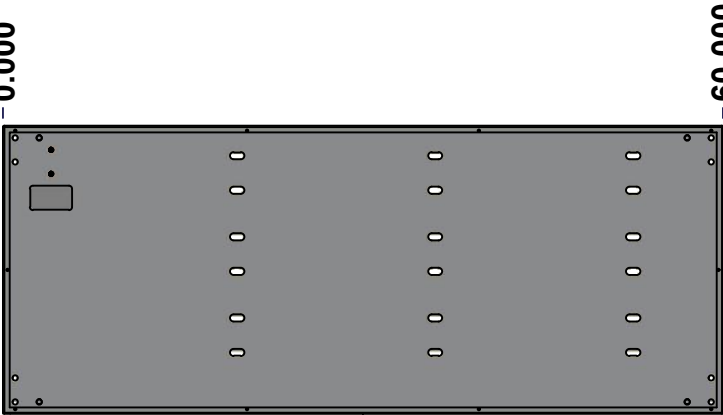
TOP



BACK



LEFT



FRONT

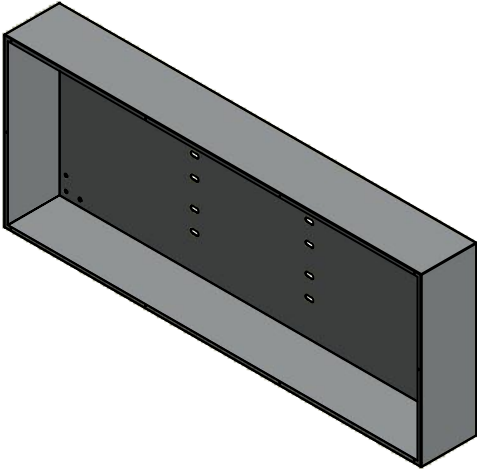


RIGHT

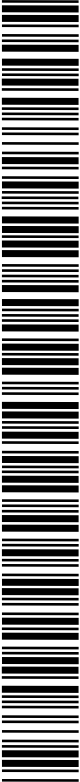


BOTTOM

No.	Revisions	Date	By/Par



Isometric View

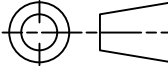


Tél: (450) 979-4373
Fax: (450) 979-4626
www.exmweb.com

Flatness
Aplatissement

Max 3.0mm

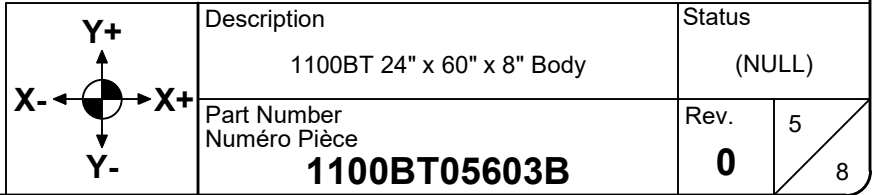
Projection



Customer Client		Date	
Drawn By Dessiné Par		Date 7/25/2022	
Material Matière		14 Ga Cold Rolled A1008 CS Type B (1.7mm)	
Color Couleur		Asa-61 Grey	Finish Fini Smooth
Description 1100BT 24" x 60" x 8" Body			Detail Rev.
Part Number Numéro Pièce 1100BT05603B			Rev. 4 0

SEE BILL OF MATERIAL ON LAST PAGE

Ce dessin est confidentiel et ne doit pas être reproduit ou utilisé sans le consentement de Eurobox

[illegible]

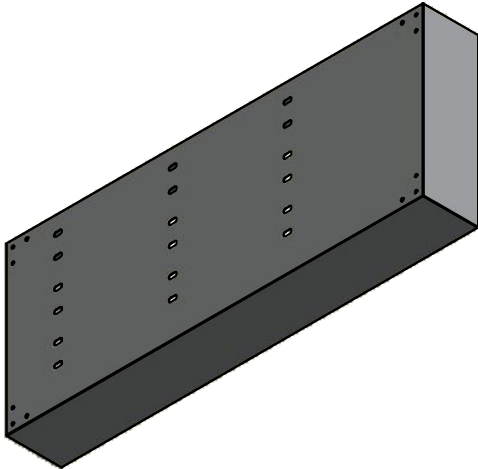
This drawing is confidential and must not be reproduced or used without the consent of EXM

Tolerance ±1/32" unless otherwise specified

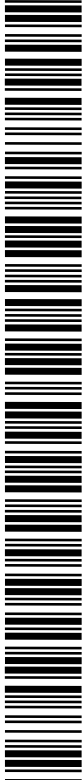
C:\Vault Workspace\Inventor Dwg\BoxCad\Result\1100BT05603\1100BT05603.idw


Tolérance ±1/32" sauf spécification contraire

No.	Revisions	Date	By/Par



Isometric View





Tél: (450) 979-4373
Fax: (450) 979-4626
www.exmweb.com

Flatness
Aplatissement
Max 3.0mm
Projection

Customer
Client

Date

Drawn By
Dessiné Par

BoxCad: BoxCad

Date 7/25/2022

Material
Matière

14 Ga Cold Rolled A1008 CS Type B (1.7mm)

Color
Couleur

Asa-61 Grey

Finish
Fin

Smooth

Description

1100BT 24" x 60" x 8" Body

Detail Rev.

Part Number
Numéro Pièce

1100BT05603B

Rev. 0

6
8

1	STK-P-02400S	0	Powder Paint (Asa-61 Grey / Smooth)
1	STK-S-00100	0	3.5" x 2" Silver Milar Flexcon Sticker
2	STK-Q-16005	1	Stud M8 x 35 (No Paint Cap Required)
1	1100BT05603B-P	0	1100BT 24" x 60" x 8" Body Part
Qty	Part Number	Rev	Description
Parts List			

Tolerance ±1/32" unless otherwise specified

C:\Vault Workspace\Inventor Dwg\BoxCad\Result\1100BT05603\1100BT05603.idw

Tolérance ±1/32" sauf spécification contraire

TOP

BACK

BOTTOM

LEFT

FRONT

RIGHT

0.000

60.000

24.000

0.000

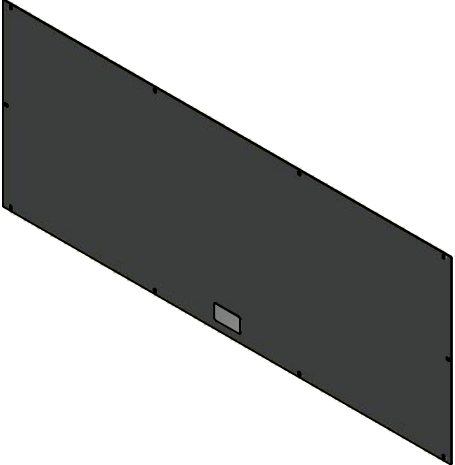
No.

Revisions

Date

By/Par

Isometric View

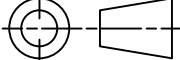


Flatness

Aplatissement

Max 3.0mm

Projection



Customer Client

Date

Drawn By
Dessiné Par

BoxCad: BoxCad

Date

7/25/2022

Material
Matière

14 Ga Cold Rolled A1008 CS Type B (1.7mm)

Color
Couleur

Asa-61 Grey

Finish
Fini

Smooth

Description

1100BT 24" x 60" Cover

Detail Rev.

Part Number
Numéro Pièce

1100BT05603C

Rev.

0

7

8

SEE BILL OF MATERIAL ON LAST PAGE

Ce dessin est confidentiel et ne doit pas être reproduit ou utilisé sans le consentement de EXM

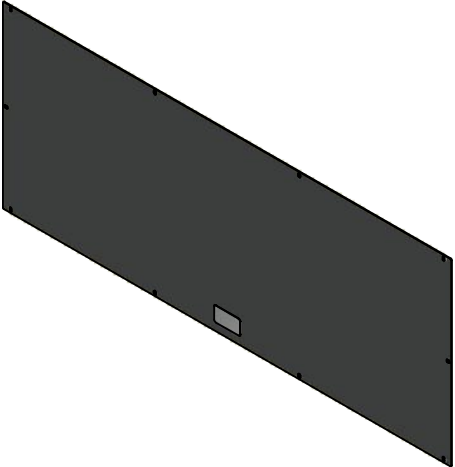
This drawing is confidential and must not be reproduced or used without the consent of EXM

Tolerance ±1/32" unless otherwise specified

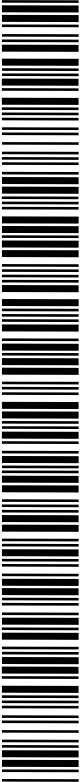
C:\Vault Workspace\Inventor Dwg\BoxCad\Result\1100BT05603\1100BT05603.idw


Tolérance ±1/32" sauf spécification contraire

No.	Revisions	Date	By/Par




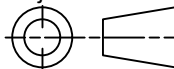
Isometric View





Tél: (450) 979-4373
Fax: (450) 979-4626
www.exmweb.com

Flatness
Aplatissement

Max 3.0mm

Projection


Customer
Client

Date

Drawn By
Dessiné Par

BoxCad: BoxCad

Date 7/25/2022

Material
Matière

14 Ga Cold Rolled A1008 CS Type B (1.7mm)

Color
Couleur

Asa-61 Grey

Finish
Fini

Smooth

Description

1100BT 24" x 60" Cover

Detail Rev.

Part Number
Numéro Pièce

1100BT05603C

Rev. 0

8

Ce dessin est confidentiel et ne doit pas être reproduit ou utilisé sans le consentement de EXM