

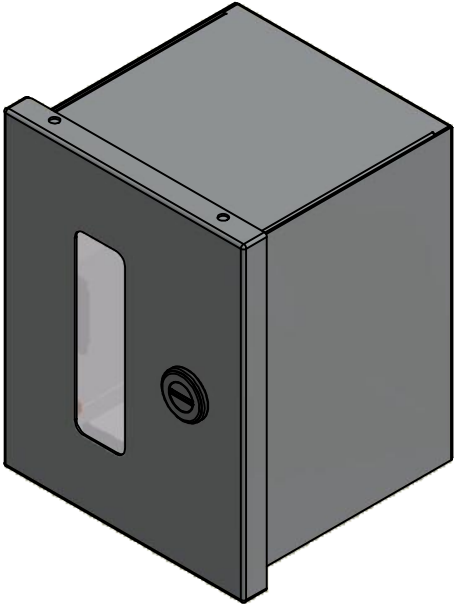
This drawing is confidential and must not be reproduced or used without the consent of EXM

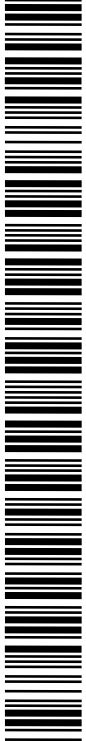
Tolerance ±1/32" unless otherwise specified

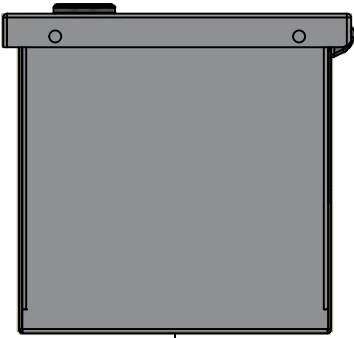
C:\Vault Workspace\Inventor Dwg\BoxCad\Result\1100W080606\1100W080606.idw

Tolérance ±1/32" sauf spécification contraire

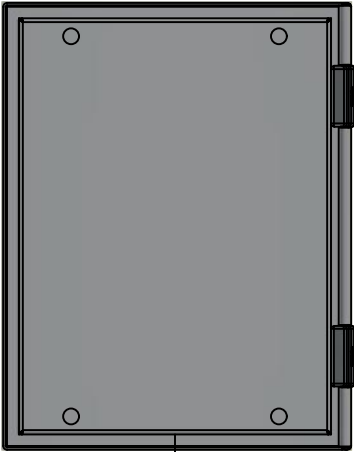
| No. | Revisions | Date | By/Par |
|-----|-----------|------|--------|
|     |           |      |        |
|     |           |      |        |
|     |           |      |        |
|     |           |      |        |
|     |           |      |        |



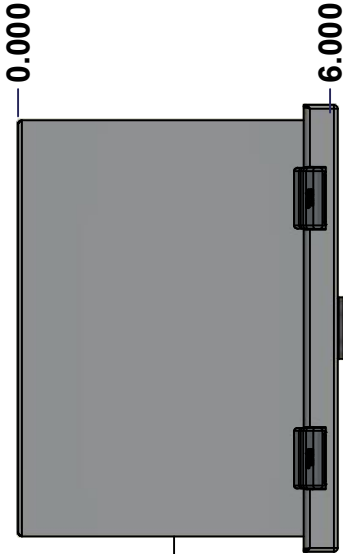




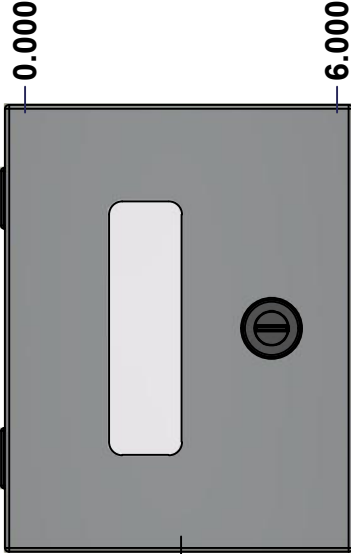
TOP



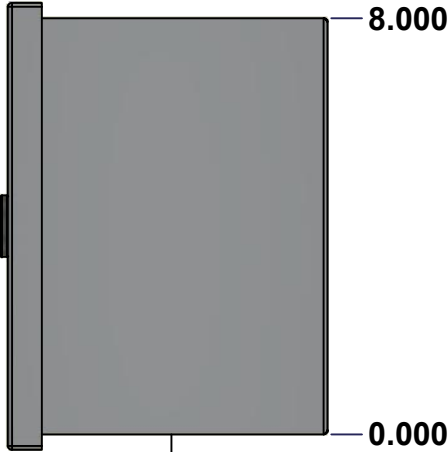
BACK



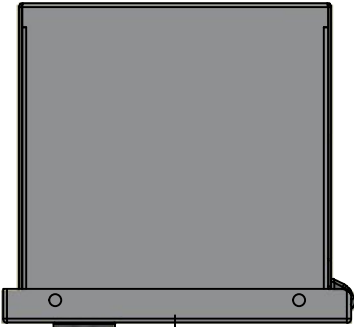
LEFT



FRONT


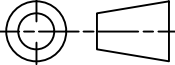


RIGHT



BOTTOM

SEE BILL OF MATERIAL ON LAST PAGE

|   |  |   |                       |
|---|--|---|-----------------------|
|  <div>Tél: (450) 979-4373<br/>Fax: (450) 979-4626<br/><a href="http://www.exmweb.com">www.exmweb.com</a></div> |  | Flatness<br>Aplatissement<br>Max 3.0mm  |                       |
|   |  | Projection<br> |                       |
| Customer<br>Client  |  | Date  |                       |
| Drawn By<br>Dessiné Par   |  | Date 26-Dec-13  |                       |
| Material<br>Matière   |  | 16 Ga Cold Rolled A1008 CS Type B (1.4mm)   |                       |
| Color<br>Couleur  |  | Asa-61 Grey   | Finish<br>Fini Smooth |
| Description<br>1100W 8" x 6" x 6" Assembly  |  |   | Detail Rev.           |
| Part Number<br>Numéro Pièce<br>1100W080606  |  |   | Rev. 0                |
|   |  |   | 1<br>8                |

This drawing is confidential and must not be reproduced or used without the consent of EXM

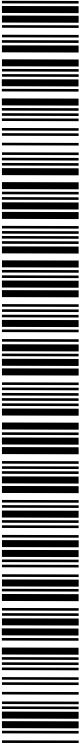
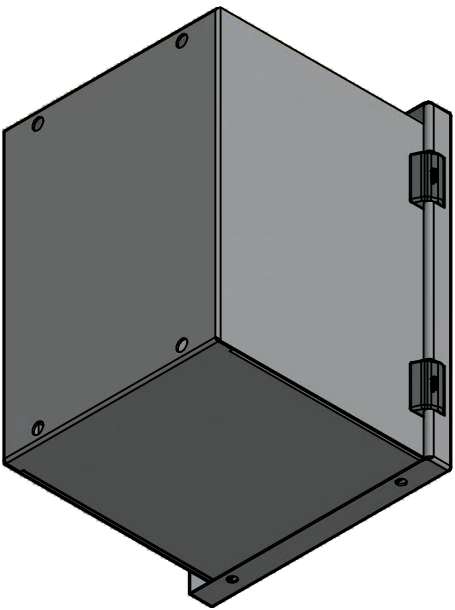
Tolerance ±1/32" unless otherwise specified

C:\Vault Workspace\Inventor Dwg\BoxCad\Result\1100W080606\1100W080606.idw

Tolérance ±1/32" sauf spécification contraire

| NOTE |  |
|------|--|
| ITEM | DESCRIPTION                                    |
| 1    | NEMA 1 Enclosure                               |
| 2    | C/W Standard ground standoffs on box and cover |
| 3    | W/O Standard door stiffener                    |
| 4    | C/W Standard inner panel (Included)            |
| 5    | C/W Standard inner panel mounting standoffs    |

| No. | Revisions | Date | By/Par |
|-----|-----------|------|--------|
|     |           |      |        |
|     |           |      |        |
|     |           |      |        |
|     |           |      |        |
|     |           |      |        |
|     |           |      |        |



Isometric View

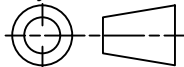


Tél: (450) 979-4373  
Fax: (450) 979-4626  
[www.exmweb.com](http://www.exmweb.com)

Flatness  
Aplatissement

Max 3.0mm

Projection



|                         |  |   |                       |
|-------------------------|--|---|-----------------------|
| Customer Client         |  | Date                                      |                       |
| Drawn By<br>Dessiné Par |  | BoxCad: BoxCad<br>Date 26-Dec-13          |                       |
| Material<br>Matière     |  | 16 Ga Cold Rolled A1008 CS Type B (1.4mm) |                       |
| Color<br>Couleur        |  | Asa-61 Grey                               | Finish<br>Fini Smooth |

|                             |  |             |   |
|-----------------------------|--|-------------|---|
| Description                 |  | Detail Rev. |   |
| 1100W 8" x 6" x 6" Assembly |  |             |   |
| Part Number<br>Numéro Pièce |  | Rev.        | 2 |
| 1100W080606                 |  | 0           | 8 |

| PACKING              |     |   |
|----------------------|-----|---|
| ITEM                 | QTY | DESCRIPTION                             |
| Cardboard sleeve     | 1   | Top                                     |
| Thermal plastic film | 1   | Use with Packing Tunnel Wrapper Machine |
| Packaging label      | 1   | White label with product number         |

|            |              |     |  |
|------------|--------------|-----|--|
| 1          | 1100W080606B | 0   | 1100W 8" x 6" x 6" Body                |
| 1          | 1100W080606C | 0   | 1100W 8" x 6" Cover                    |
| 1          | STK-K-00200  | 1   | M6 x 8mm Hexagon/Slot Screw (Bag of 6) |
| 1          | 880 SP0806   | 0   | 880 SP0806 - Inner Panel               |
| 2          | STK-Q-08100  | 1   | M5 Nylon Insert Lock Nut               |
| Qty        | Part Number  | Rev | Description                            |
| Parts List |              |     |  |

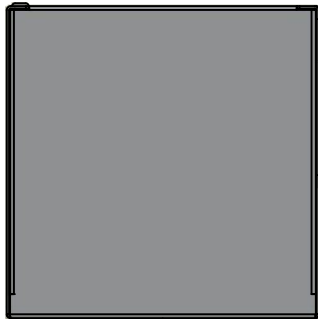
Ce dessin est confidentiel et ne doit pas être reproduit ou utilisé sans le consentement de EXM

This drawing is confidential and must not be reproduced or used without the consent of EXM

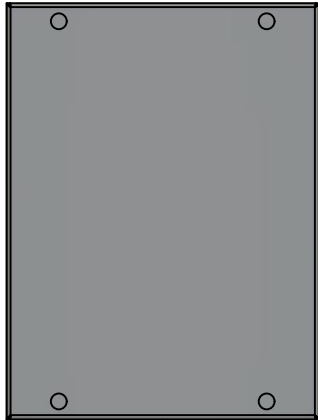
Tolerance ±1/32" unless otherwise specified

C:\Vault Workspace\Inventor Dwg\BoxCad\Result\1100W080606\1100W080606.idw

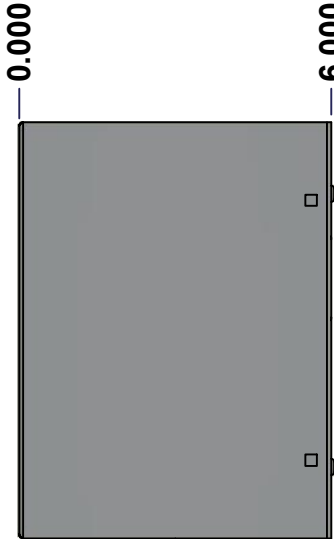
Tolérance ±1/32" sauf spécification contraire



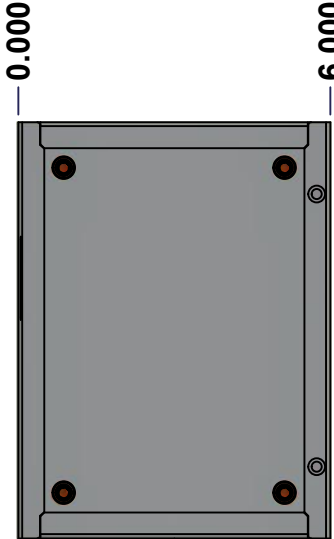
TOP



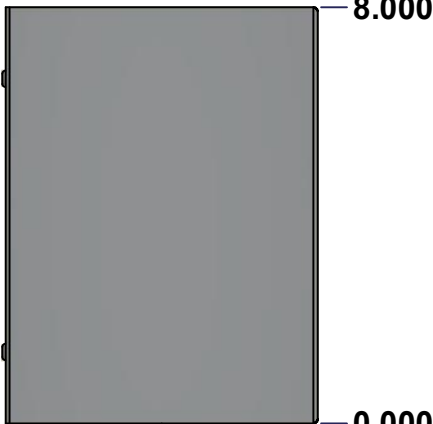
BACK



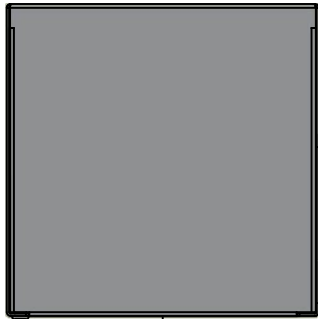
LEFT



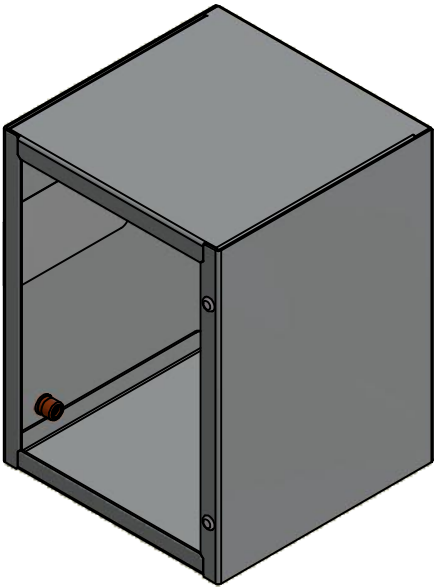
FRONT



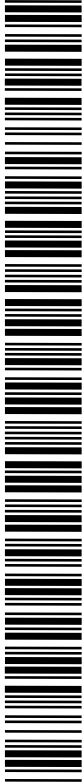
RIGHT



BOTTOM



Isometric View



Ce dessin est confidentiel et ne doit pas être reproduit ou utilisé sans le consentement de EXM

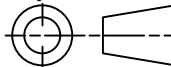


Tél: (450) 979-4373  
Fax: (450) 979-4626  
[www.exmweb.com](http://www.exmweb.com)

Flatness  
Aplatissement

Max 3.0mm

Projection



Customer  
Client

Date

Drawn By  
Dessiné Par

BoxCad: BoxCad

Date

26-Dec-13

Material  
Matière

16 Ga Cold Rolled A1008 CS Type B (1.4mm)

Color  
Couleur

Asa-61 Grey

Finish  
Fini

Smooth

Description

1100W 8" x 6" x 6" Body

Detail Rev.

Part Number  
Numéro Pièce

1100W080606B

Rev.

3

8

SEE BILL OF MATERIAL ON LAST PAGE

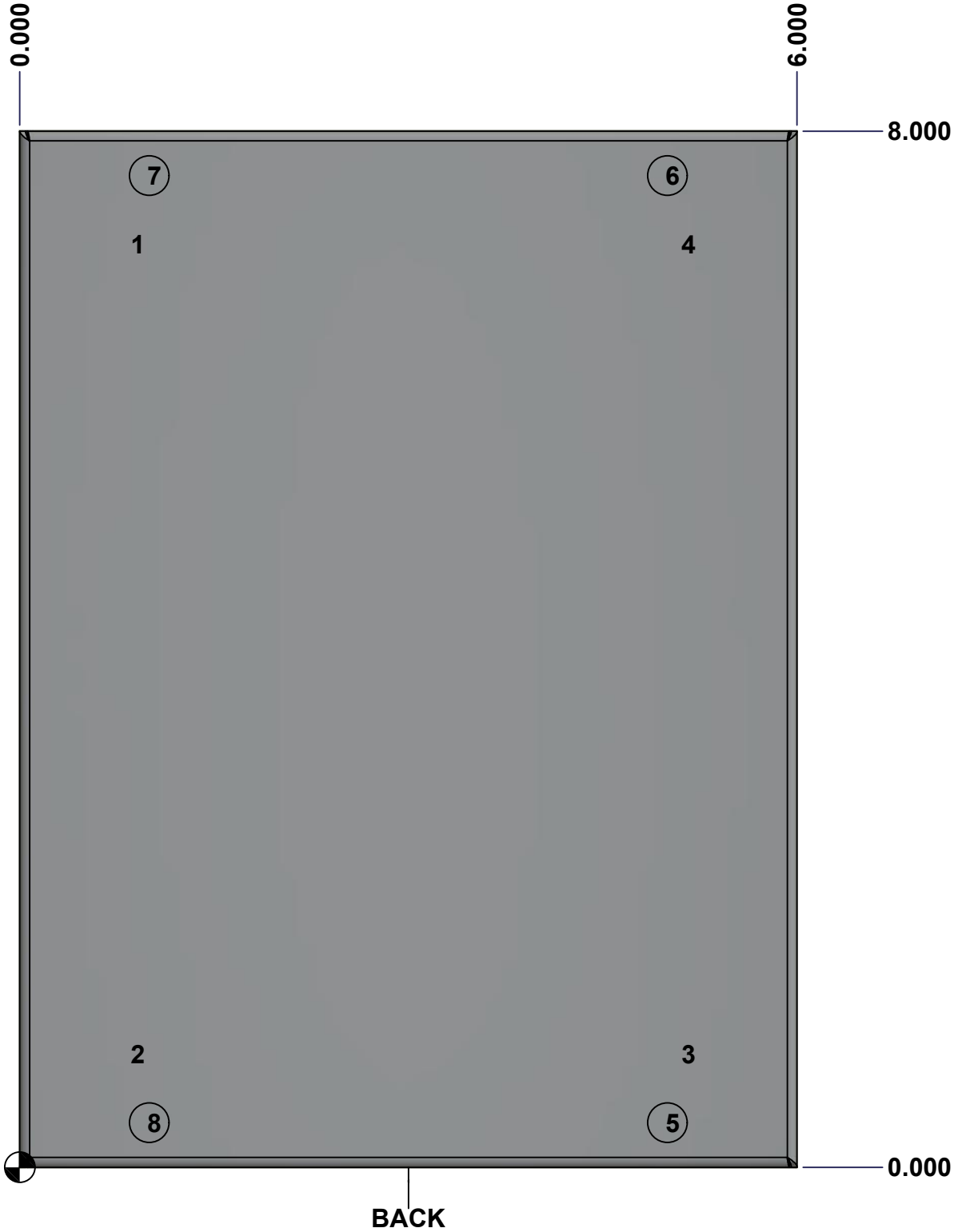
This drawing is confidential and must not be reproduced or used without the consent of EXM

Tolerance ±1/32" unless otherwise specified

C:\Vault Workspace\Inventor Dwg\BoxCad\Result\1100W080606\1100W080606.idw

Tolérance ±1/32" sauf spécification contraire

| STANDARD FEATURES ARE NOT LISTED IN THIS HOLE TABLE |       |       |                                |
|---|-------|-------|--------------------------------|
| HOLE TABLE - BACK VIEW (CUSTOM FEATURE ONLY)        |       |       |                                |
| CUT-OUT   | XDIM  | YDIM  | DESCRIPTION                    |
| 1   | 0.875 | 7.125 | IP STANDOFF M6 x 10mm (Inside) |
| 2   | 0.875 | 0.875 | IP STANDOFF M6 x 10mm (Inside) |
| 3   | 5.125 | 0.875 | IP STANDOFF M6 x 10mm (Inside) |
| 4   | 5.125 | 7.125 | IP STANDOFF M6 x 10mm (Inside) |
| -----   | ----- | ----- | -----                          |
| 5   | 5.000 | 0.344 | RND Ø0.305                     |
| 6   | 5.000 | 7.656 | RND Ø0.305                     |
| 7   | 1.000 | 7.656 | RND Ø0.305                     |
| 8   | 1.000 | 0.344 | RND Ø0.305                     |



Ce dessin est confidentiel et ne doit pas être reproduit ou utilisé sans le consentement de EXM

|  |   |                  |        |
|--|---|------------------|--------|
|  | Description<br>1100W 8" x 6" x 6" Body      | Status<br>(NULL) |        |
|  | Part Number<br>Numéro Pièce<br>1100W080606B | Rev.<br>0        | 4<br>8 |

This drawing is confidential and must not be reproduced or used without the consent of EXM

Tolerance ±1/32" unless otherwise specified

C:\Vault Workspace\Inventor Dwg\BoxCad\Result\1100W080606\1100W080606.idw

Tolérance ±1/32" sauf spécification contraire

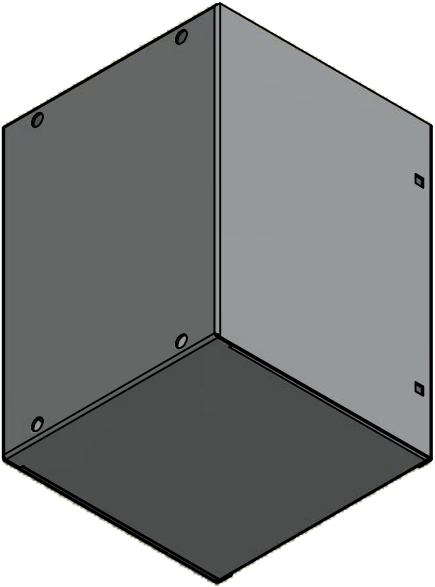
Ce dessin est confidentiel et ne doit pas être reproduit ou utilisé sans le consentement de EXM

No.

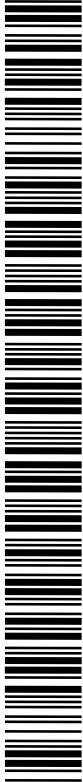
Revisions


Date

By/Par



Isometric View






Tél: (450) 979-4373

Fax: (450) 979-4626

[www.exmweb.com](http://www.exmweb.com)

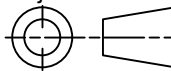
Flatness

Aplatissement



Max 3.0mm

Projection



Customer

Client

Date

Drawn By

Dessiné Par

BoxCad: BoxCad

Date

26-Dec-13

Material

Matière

16 Ga Cold Rolled A1008 CS Type B (1.4mm)

Color

Couleur

Asa-61 Grey

Finish

Fini

Smooth

Description

1100W 8" x 6" x 6" Body

Detail Rev.

Part Number

Numéro Pièce

1100W080606B

Rev.

0

5

8

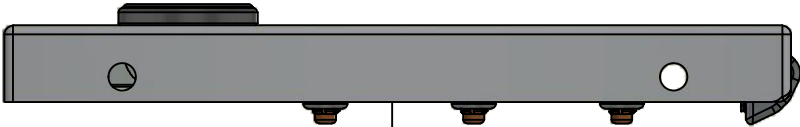
|            |                |     |  |
|------------|----------------|-----|--|
| 1          | STK-P-02400S   | 0   | Powder Paint (Asa-61 Grey / Smooth)    |
| 1          | STK-S-00100    | 0   | 3.5" x 2" Silver Milar Flexcon Sticker |
| 2          | STK-Q-77110    | 1   | 5412 ES Cover Plastic Plug             |
| 5          | STK-Q-08350    | 5   | Standoff M6 x 10mm                     |
| 1          | 1100W080606B-P | 0   | 1100W 8" x 6" x 6" Body Part           |
| Qty        | Part Number    | Rev | Description                            |
| Parts List |                |     |  |

This drawing is confidential and must not be reproduced or used without the consent of EXM

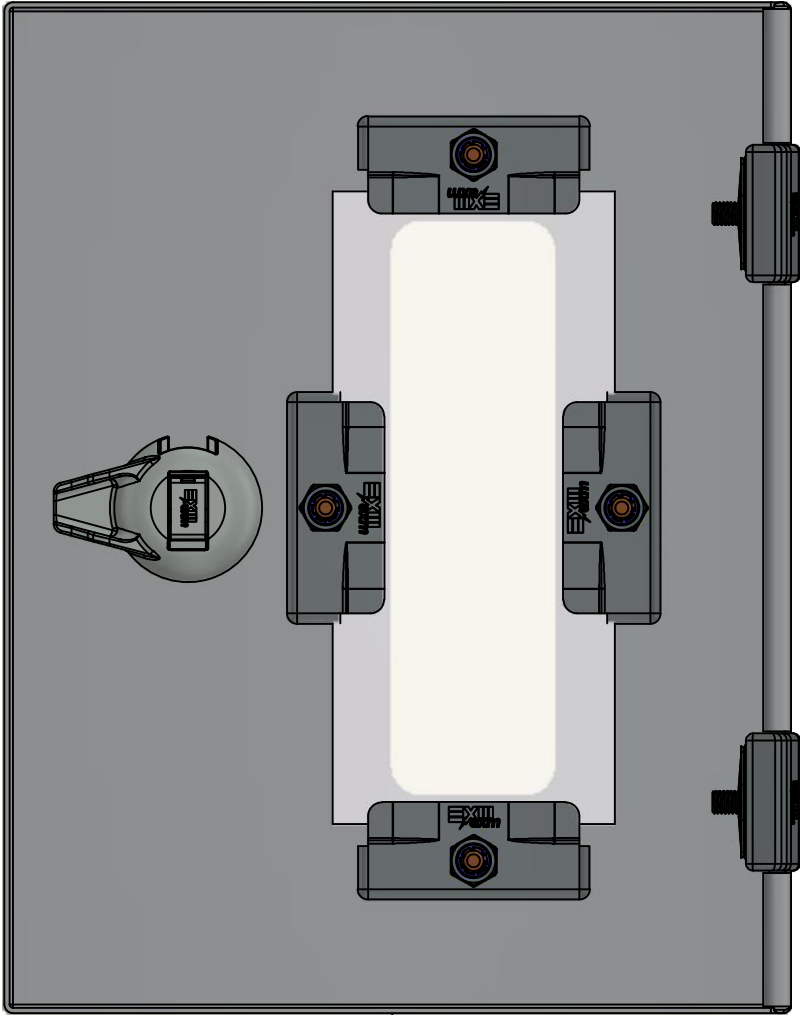
Tolerance  $\pm 1/32"$  unless otherwise specified

C:\Vault Workspace\Inventor Dwg\BoxCad\Result\1100W080606\1100W080606.idw

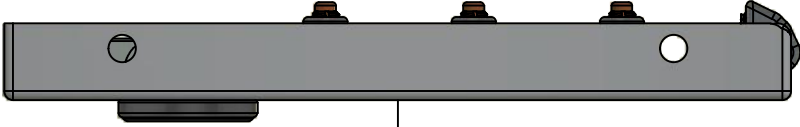
Tolérance  $\pm 1/32"$  sauf spécification contraire



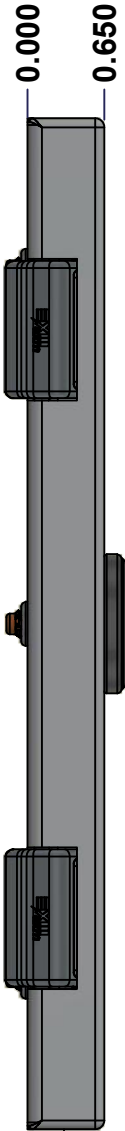
TOP



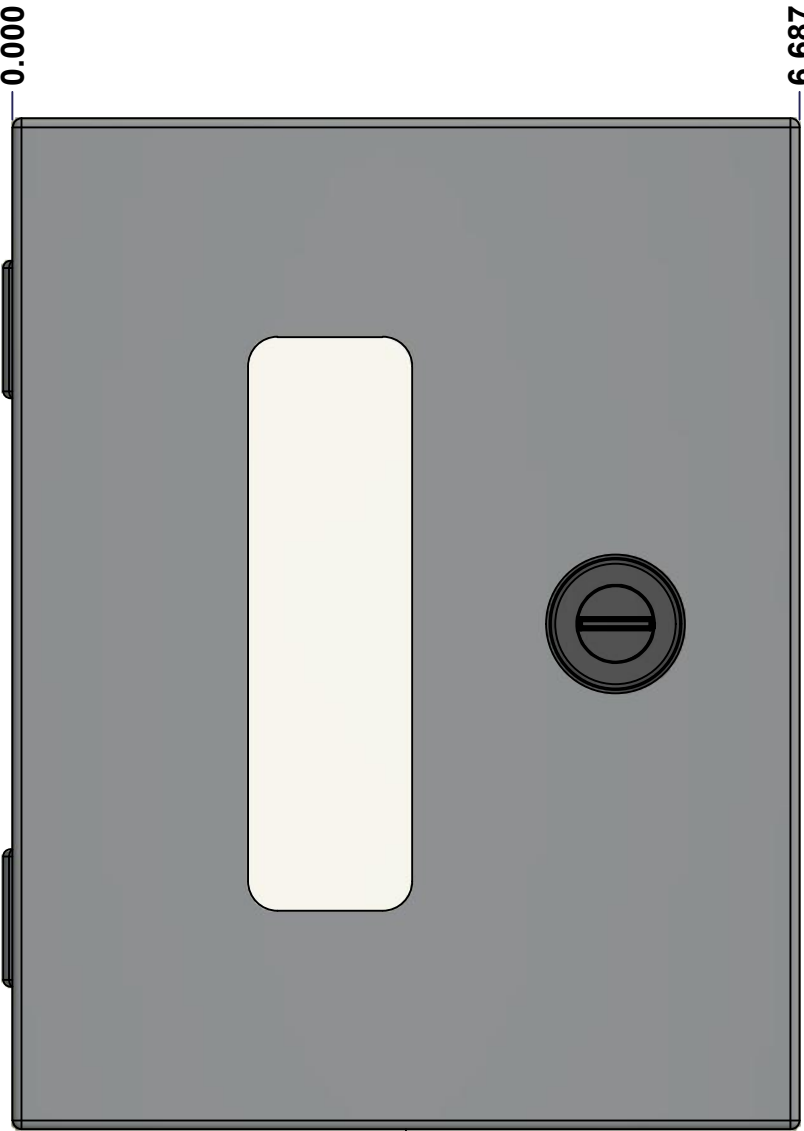
BACK



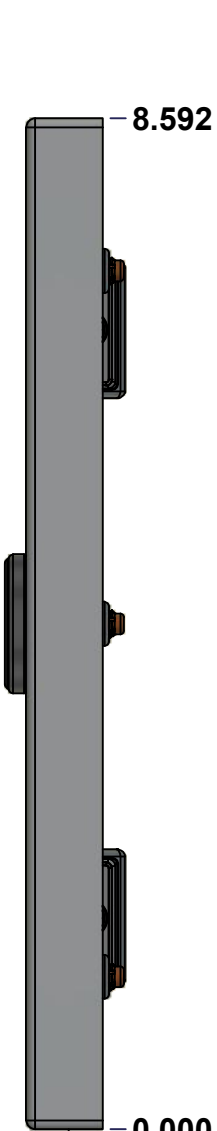
BOTTOM



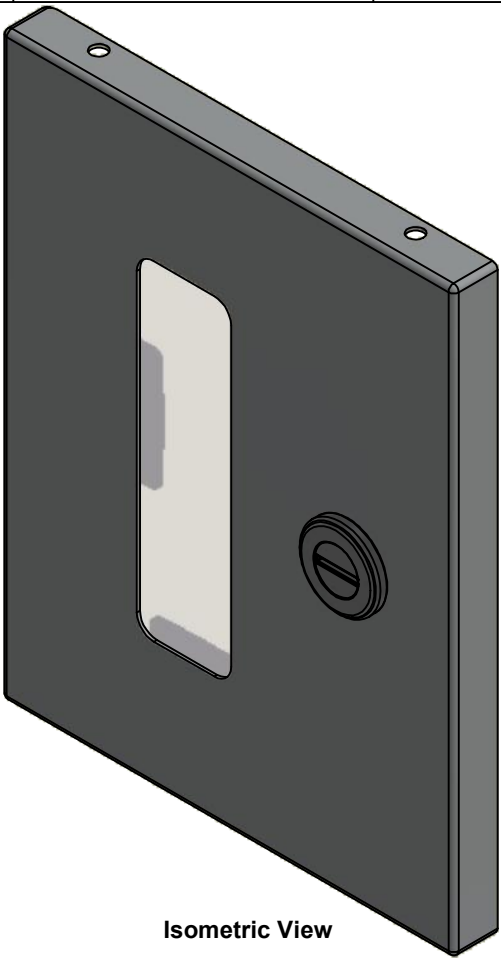
LEFT



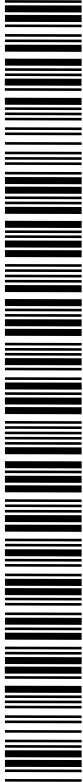
FRONT



RIGHT


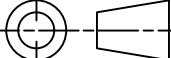


Isometric View



Ce dessin est confidentiel et ne doit pas être reproduit ou utilisé sans le consentement de EXM

| No. | Revisions | Date | By/Par |
|-----|-----------|------|--------|
|     |           |      |        |
|     |           |      |        |
|     |           |      |        |
|     |           |      |        |

|   |  |   |                          |
|---|--|---|--------------------------|
|  <div>Tél: (450) 979-4373<br/>Fax: (450) 979-4626<br/><a href="http://www.exmweb.com">www.exmweb.com</a></div> |  | Flatness<br>Aplatissement<br>Max 3.0mm  |                          |
|   |  | Projection<br> |                          |
| Customer<br>Client  |  | Date  |                          |
| Drawn By<br>Dessiné Par   |  | Date 26-Dec-13  |                          |
| Material<br>Matière   |  | 16 Ga Cold Rolled A1008 CS Type B (1.4mm)   |                          |
| Color<br>Couleur  |  | Asa-61 Grey   | Finish<br>Fini<br>Smooth |
| Description<br>1100W 8" x 6" Cover  |  |   | Detail Rev.              |
| Part Number<br>Numéro Pièce<br>1100W080606C   |  | Rev.<br>0   | 6<br>8                   |

SEE BILL OF MATERIAL ON LAST PAGE

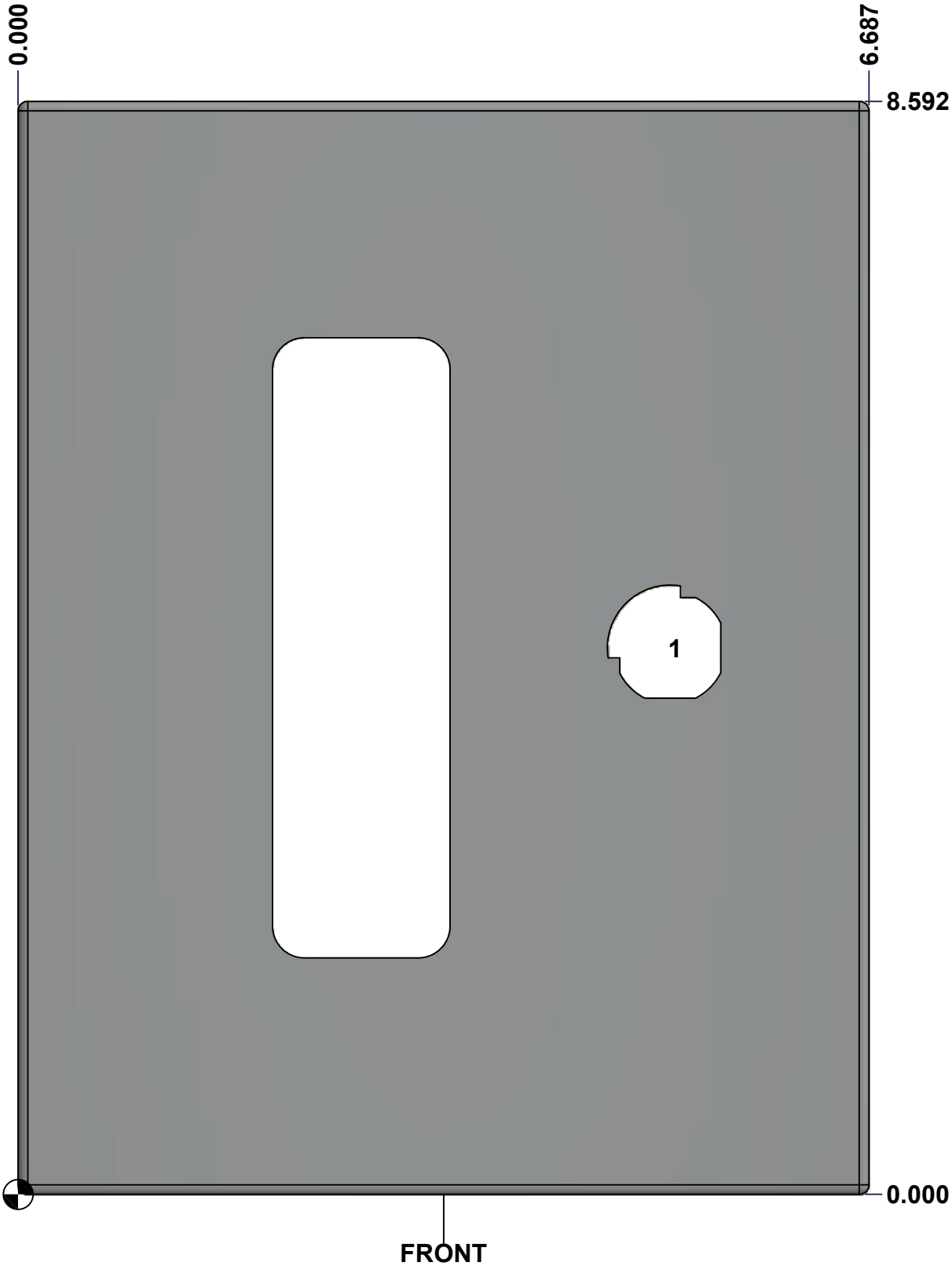
This drawing is confidential and must not be reproduced or used without the consent of EXM

Tolerance ±1/32" unless otherwise specified

C:\Vault Workspace\Inventor Dwg\BoxCad\Result\1100W080606\1100W080606.idw

Tolérance ±1/32" sauf spécification contraire

| STANDARD FEATURES ARE NOT LISTED IN THIS HOLE TABLE |       |       |                          |
|---|-------|-------|--------------------------|
| HOLE TABLE - FRONT VIEW (CUSTOM FEATURE ONLY)       |       |       |                          |
| CUT-OUT   | XDIM  | YDIM  | DESCRIPTION              |
| 1   | 5.125 | 4.296 | LOCK 880 SCQ1-SLZ @ 0.0° |



|  |   |                  |        |
|--|---|------------------|--------|
|  | Description<br>1100W 8" x 6" x 6" Cover     | Status<br>(NULL) |        |
|  | Part Number<br>Numéro Pièce<br>1100W080606C | Rev.<br>0        | 7<br>8 |

Ce dessin est confidentiel et ne doit pas être reproduit ou utilisé sans le consentement de EXM

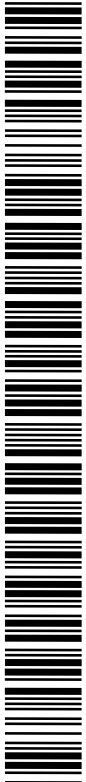
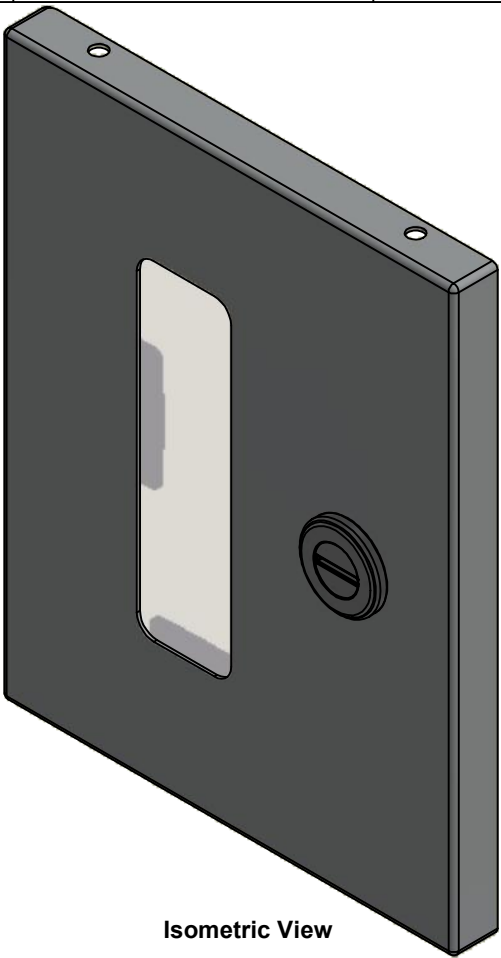
This drawing is confidential and must not be reproduced or used without the consent of EXM

Tolerance ±1/32" unless otherwise specified

C:\Vault Workspace\Inventor Dwg\BoxCad\Result\1100W080606\1100W080606.idw

Tolérance ±1/32" sauf spécification contraire

| No. | Revisions | Date | By/Par |
|-----|-----------|------|--------|
|     |           |      |        |
|     |           |      |        |
|     |           |      |        |
|     |           |      |        |
|     |           |      |        |



Isometric View

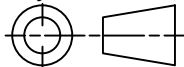


Tél: (450) 979-4373  
Fax: (450) 979-4626  
[www.exmweb.com](http://www.exmweb.com)

Flatness  
Aplatissement

Max 3.0mm

Projection



|   |                |
|---|----------------|
| Customer Client   | Date           |
| Drawn By<br>Dessiné Par BoxCad: BoxCad                        | Date 26-Dec-13 |
| Material<br>Matière 16 Ga Cold Rolled A1008 CS Type B (1.4mm) |                |

|                              |                       |
|------------------------------|-----------------------|
| Color<br>Couleur Asa-61 Grey | Finish<br>Fini Smooth |
|------------------------------|-----------------------|

|                                    |             |
|------------------------------------|-------------|
| Description<br>1100W 8" x 6" Cover | Detail Rev. |
|------------------------------------|-------------|

|  |                  |        |
|--|------------------|--------|
| Part Number<br>Numéro Pièce<br><b>1100W080606C</b> | Rev.<br><b>0</b> | 8<br>8 |
|--|------------------|--------|

|            |                |     |  |
|------------|----------------|-----|--|
| 1          | 880 SCQ1-SLZ   | 0   | 1100 1/4 Turn Lock                     |
| 4          | STK-Q-60702    | 1   | 880 WK - Lexan 1/4" Fixing Bracket     |
| 4          | STK-Q-16055    | 1   | M6 x 18mm Stud (No Paint Cap Required) |
| 1          | 1100W080606LX  | 0   | 1100W 8" x 6" x 6" Lexan               |
| 1          | STK-P-02400S   | 0   | Powder Paint (Asa-61 Grey / Smooth)    |
| 1          | 1100W080606C-P | 0   | 1100W 8" x 6" x 6" Cover Part          |
| 2          | STK-A-33033    | 4   | 5412 ESMCH Hinge                       |
| Qty        | Part Number    | Rev | Description                            |
| Parts List |                |     |  |

Ce dessin est confidentiel et ne doit pas être reproduit ou utilisé sans le consentement de EXM

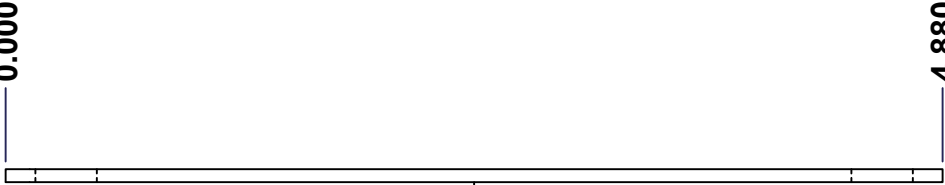


This drawing is confidential and must not be reproduced or used without the consent of EXM

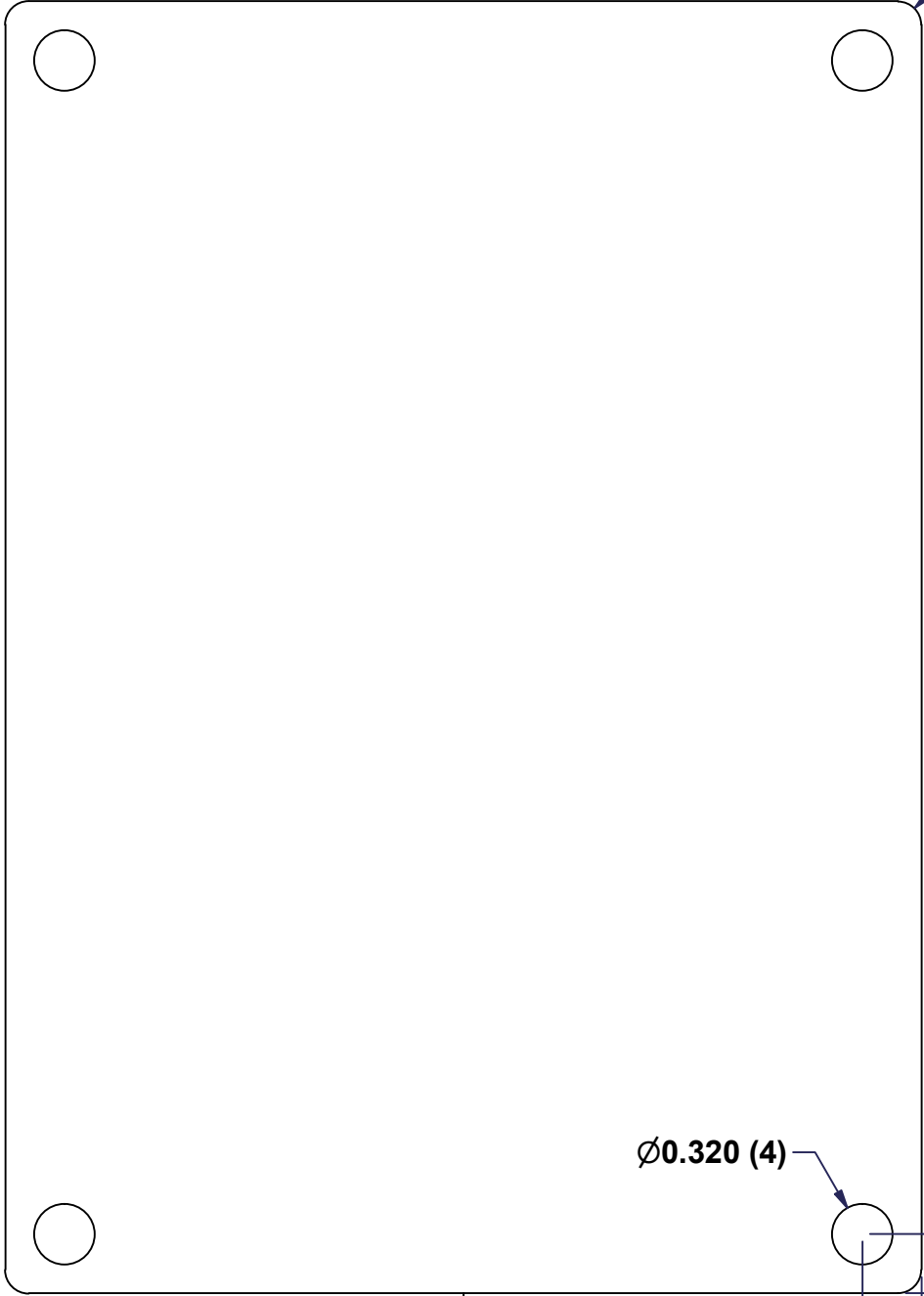
Tolerance ±1/32" unless otherwise specified

C:\Vault Workspace\Inventor Dwg\Inv-8\880SP\880SP0806.idw

Tolérance ±1/32" sauf spécification contraire



TOP



FRONT

0.315

0.315

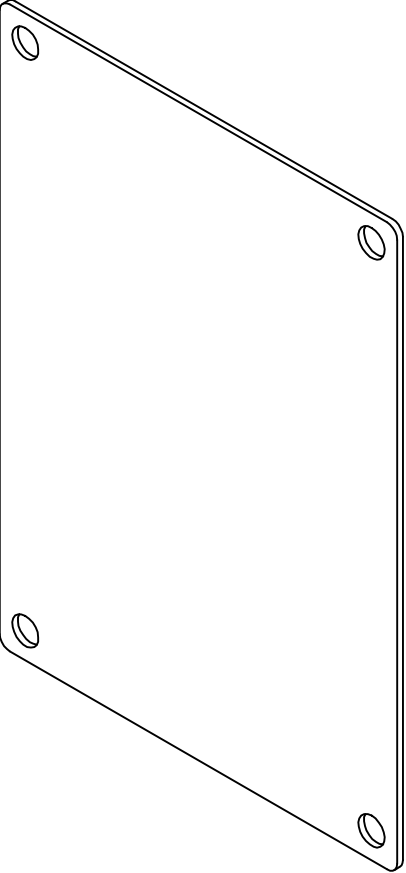


RIGHT

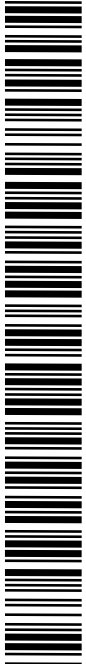
6.880



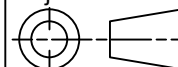
0.000

| No. | Revisions | Date | By/Par |
|-----|-----------|------|--------|
|     |           |      |        |
|     |           |      |        |
|     |           |      |        |
|     |           |      |        |
|     |           |      |        |



Isometric View



|   |  |  |  |   |  |
|---|--|--|--|---|--|
|  |  | Tél: (450) 979-4373<br>Fax: (450) 979-4626<br>www.exmweb.com |  | Flatness<br>Aplatissement<br><br>Max 3.0mm |  |
|   |  |  |  | Projection<br>                             |  |
| Customer<br>Client  |  |  |  | Date  |  |
| Drawn By<br>Dessiné Par      BoxCad   |  |  |  | Date    23-Jan-07   |  |
| Material<br>Matière   |  | 14 Ga Cold Rolled A1008 CS Type B                            |  |   |  |
| Color<br>Couleur  |  | White  |  | Finish<br>Fini      Smooth  |  |
| Description<br><br>880 SP0806 - Inner Panel   |  |  |  | Detail Rev.   |  |
| Part Number<br>Numéro Pièce<br><br><b>880 SP0806</b>                                  |  |  |  | Rev.<br><br><b>0</b>  |  |
|   |  |  |  | 1<br><br>2  |  |

SEE BILL OF MATERIAL ON LAST PAGE

Ce dessin est confidentiel et ne doit pas être reproduit ou utilisé sans le consentement de EXM

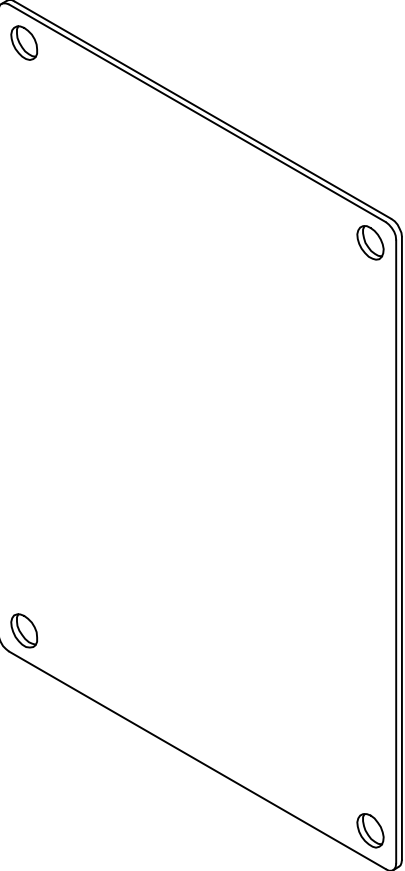
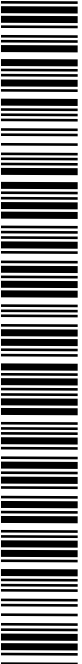


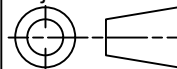
This drawing is confidential and must not be reproduced or used without the consent of EXM

Tolerance ±1/32" unless otherwise specified

C:\Vault Workspace\Inventor Dwg\Inv-8\880SP\880SP0806.idw

Tolérance ±1/32" sauf spécification contraire

Ce dessin est confidentiel et ne doit pas être reproduit ou utilisé sans le consentement de EXM

|   |           |  |  |
|---|-----------|--|--|
| No.   | Revisions | Date   | By/Par   |
|   |           |  |  |
|   |           |  |  |
|   |           |  |  |
|   |           |  |  |
|   |           |  |  |
| <br><b>Isometric View</b>   |           |  |  |
| <br>Tél: (450) 979-4373<br>Fax: (450) 979-4626<br>www.exmweb.com |           | Flatness<br>Aplatissement<br><br>Max 3.0mm<br>Projection<br> |  |
| Customer<br>Client  |           | Date   |  |
| Drawn By<br>Dessiné Par     BoxCad  |           | Date    23-Jan-07  |  |
| Material<br>Matière                    14 Ga Cold Rolled A1008 CS Type B  |           |  |  |
| Color<br>Couleur                    White   |           | Finish<br>Fini                         Smooth  |  |
| Description<br><br>880 SP0806 - Inner Panel   |           |  | Detail Rev.  |
| Part Number<br>Numéro Pièce<br><b>880 SP0806</b>  |           |  | Rev.    2<br><b>0</b> 2  |

|            |              |     |                               |
|------------|--------------|-----|-------------------------------|
| 1          | STK-P-02401S | 0   | Powder Paint (White / Smooth) |
| 1          | 880 SP0806-P | 0   | 880 SP0806 - Inner Panel Part |
| Qty        | Part Number  | Rev | Description                   |
| Parts List |              |     |                               |