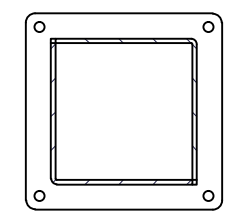
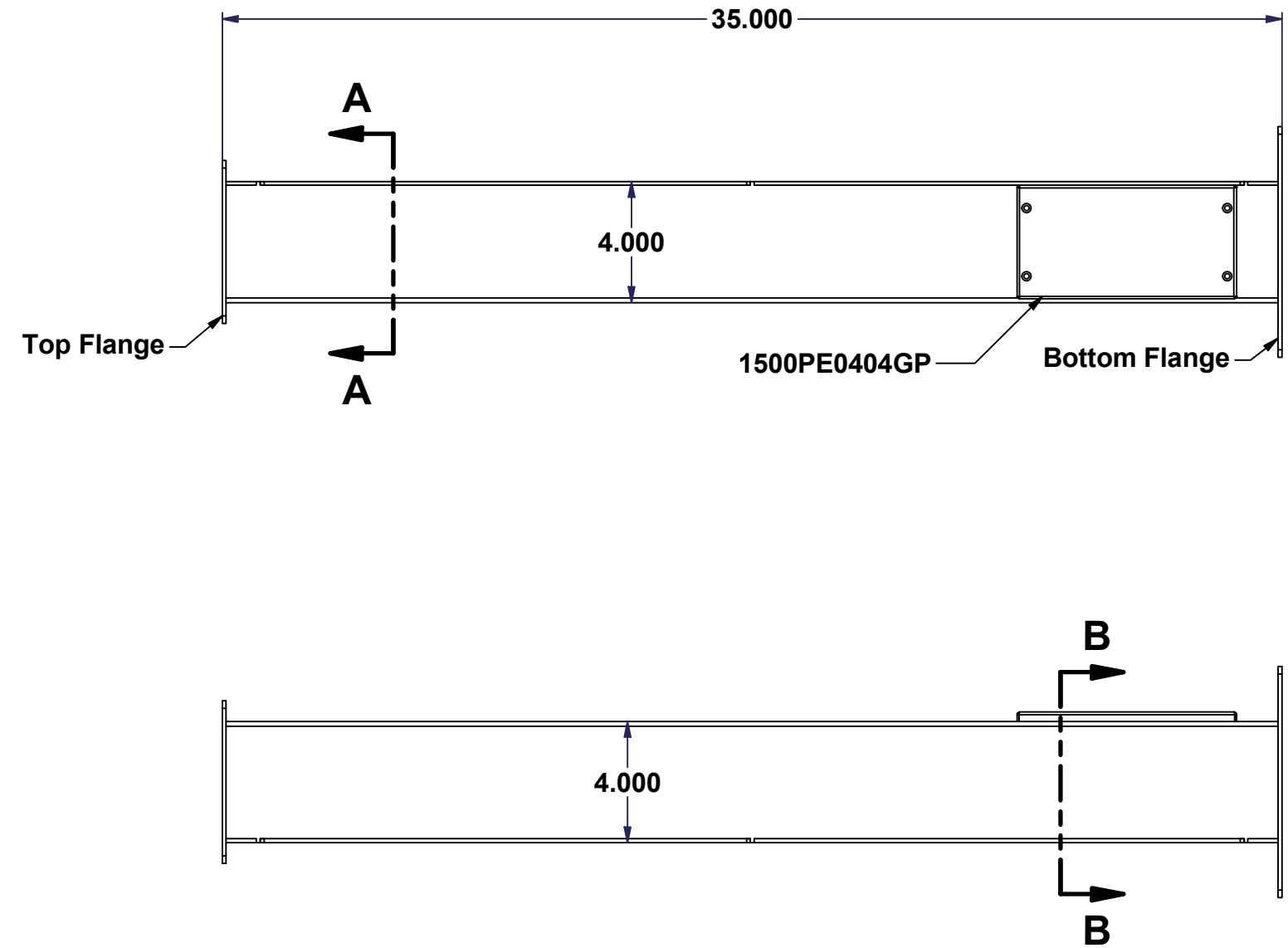


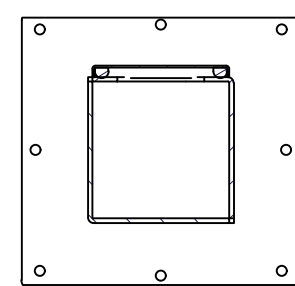
All knockouts are actual size / Les disques défonçables sont grandeur réel
 All dimensions are before paint / Toutes les dimensions sont avant peinture

This drawing is confidential and must not be reproduced or used without the consent of EXM

Ce dessin est confidentiel et ne doit pas être reproduit ou utilisé sans le consentement de EXM

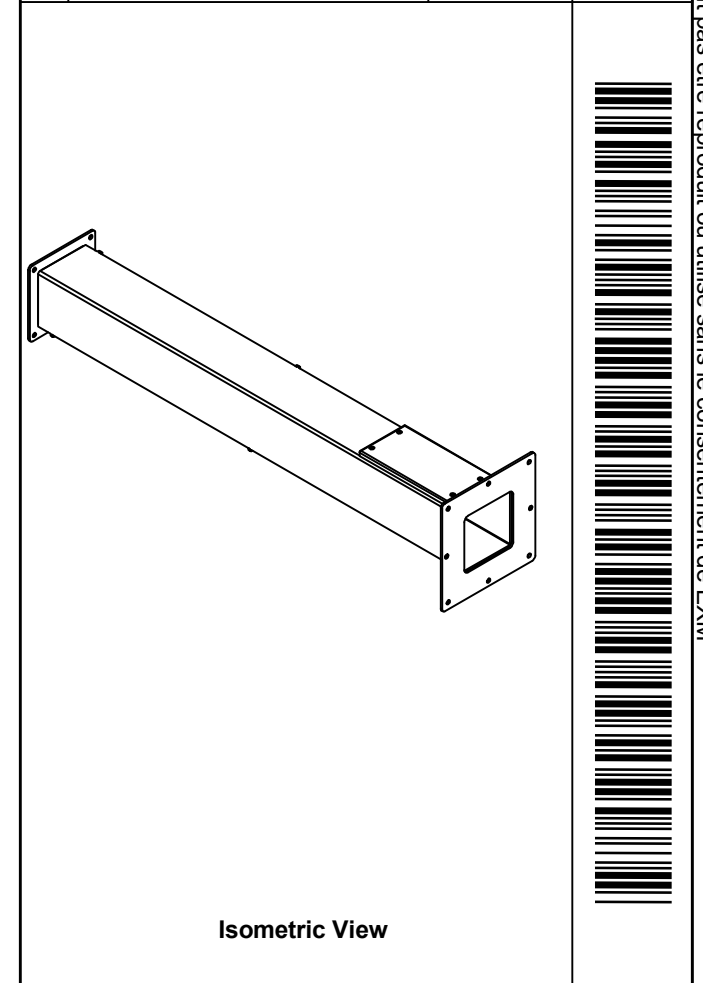


SECTION A-A



SECTION B-B

No.	Revisions	Date	By/Par



Isometric View

EXM
 Tél: (450) 979-4373
 Fax: (450) 979-4626
 www.exmweb.com

Flatness
 Aplatissement
 Max 3.0mm

Projection

Customer Client	Date
Drawn By / Dessiné Par: Michelp	Date: 03-Aug-10
Material / Matière	See Part List
Color / Couleur	See Part List
Finish / Fini	See Part List

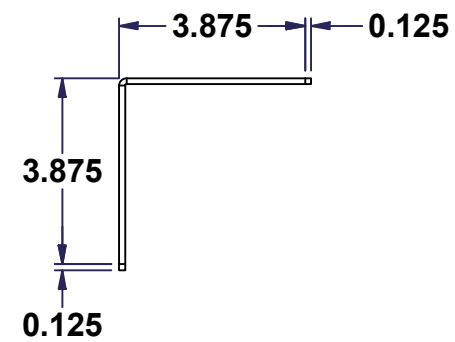
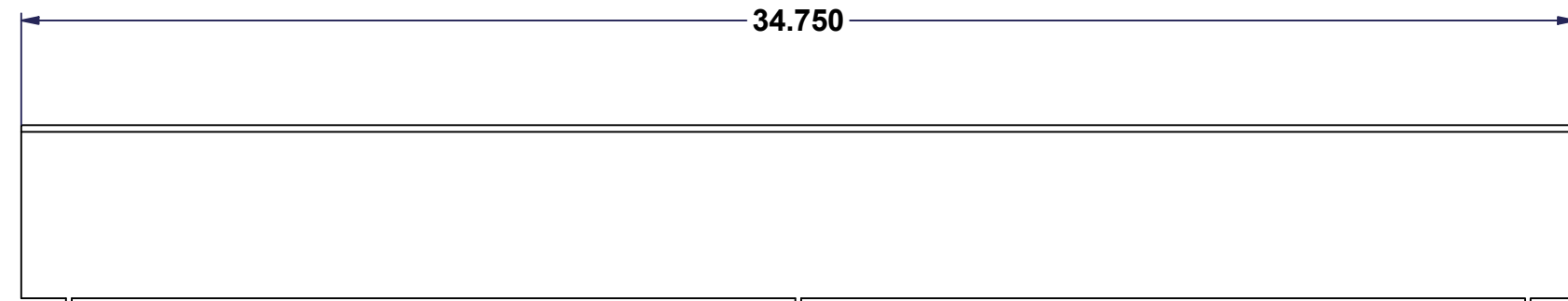
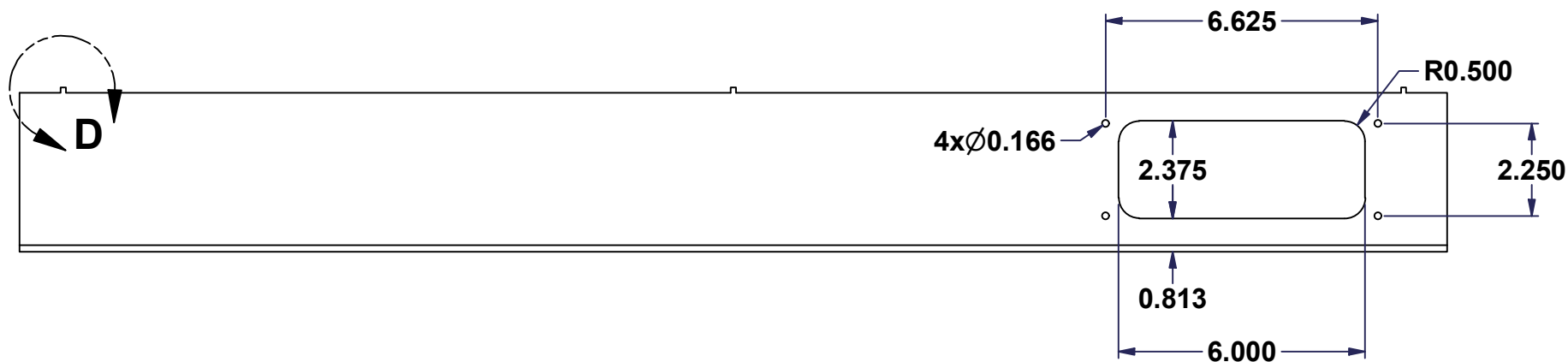
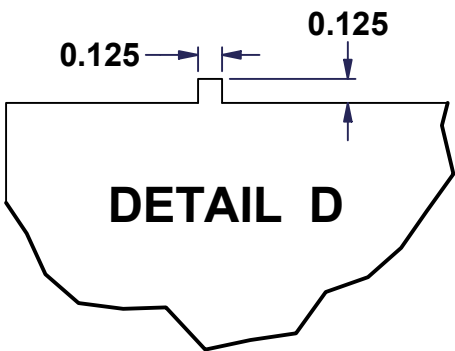
Parts List							
Item	Qty	Part Number	Rev	Description	Material	Color	Finish
1	1	1500PE040435B1-P	0	1500 PE 040435 Part 1	11 Ga H.R.P. & O. (3.0mm)	Asa-61 Grey	Smooth
2	1	1500PE040435B2-P	0	1500 PE 040435 Part 2	11 Ga H.R.P. & O. (3.0mm)	Asa-61 Grey	Smooth
3	1	1500PE0404FL-BT	1	4" x 4" Bottom pedestal flange	11 Ga H.R.P. & O. (3.0mm)	Asa-61 Grey	Smooth
4	1	1500PE0404FL-T	1	4" x 4" Top pedestal flange	11 Ga H.R.P. & O. (3.0mm)	Asa-61 Grey	Smooth
5	1	1500PE0404GP	0	1500PE0404 Gland Plate	See Part List	See Part List	See Part List

Description	1500 PE 040435 Assembly	Detail Rev.	
Part Number / Numéro Pièce	1500PE040435B	Rev.	0
			1/3

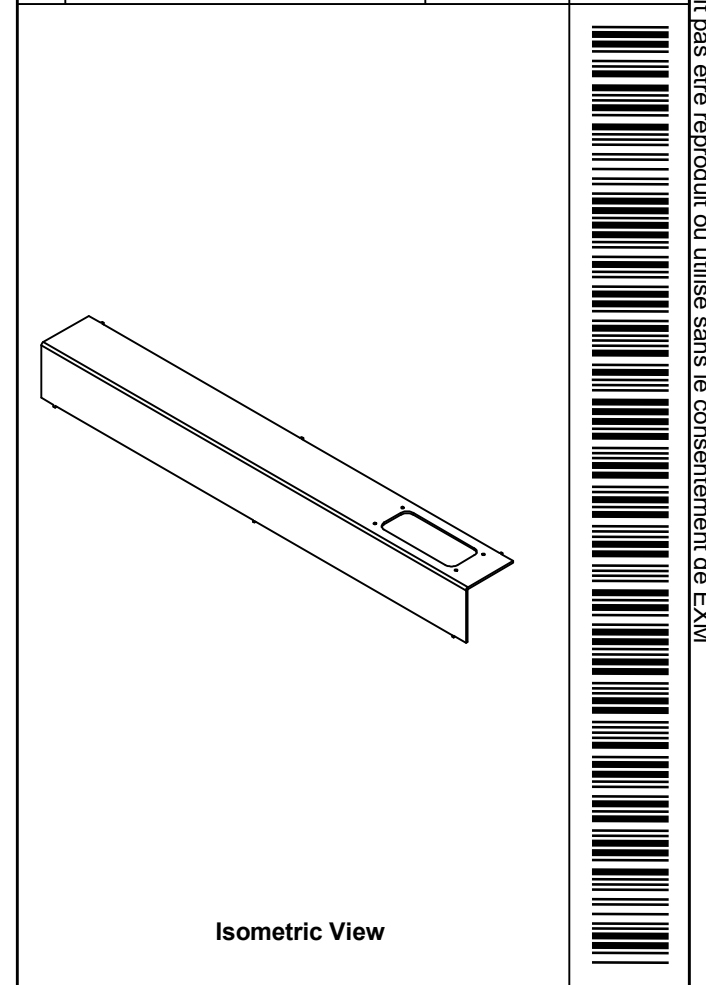
All knockouts are actual size / Les disques défonçables sont grandeur réel
 All dimensions are before paint / Toutes les dimensions sont avant peinture


This drawing is confidential and must not be reproduced or used without the consent of EXM

Ce dessin est confidentiel et ne doit pas être reproduit ou utilisé sans le consentement de EXM



No.	Revisions	Date	By/Par



 Tél: (450) 979-4373 Fax: (450) 979-4626 www.exmweb.com		Flatness Aplatissement
		Max 3.0mm
Customer Client		Date
Drawn By / Dessiné Par: Michelp		Date: 03-Aug-10
Material / Matière: 11 Ga H.R.P. & O. (3.0mm)		
Color / Couleur: Asa-61 Grey	Finish / Fini: Smooth	
Description: 1500 PE 040435 Part 1		Detail Rev.
Part Number / Numéro Pièce: 1500PE040435B1-P		Rev. 2 0 / 3

Tolerance ±1/32" unless otherwise specified

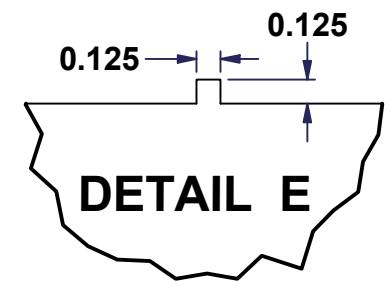
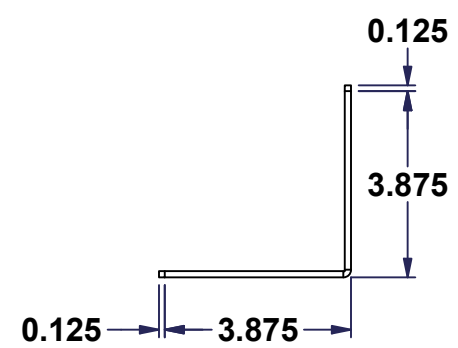
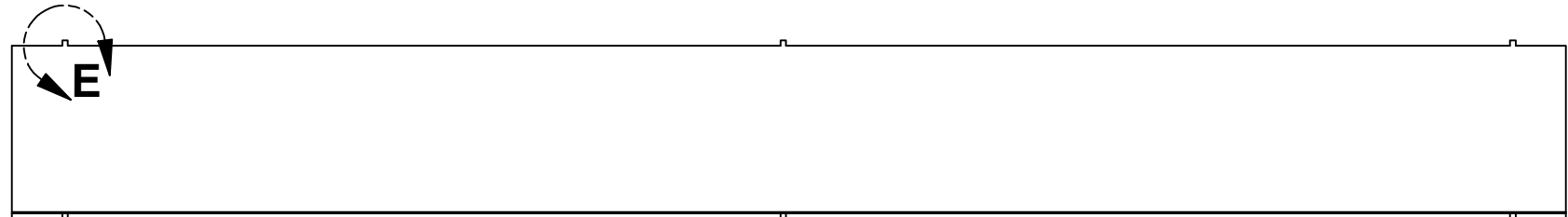
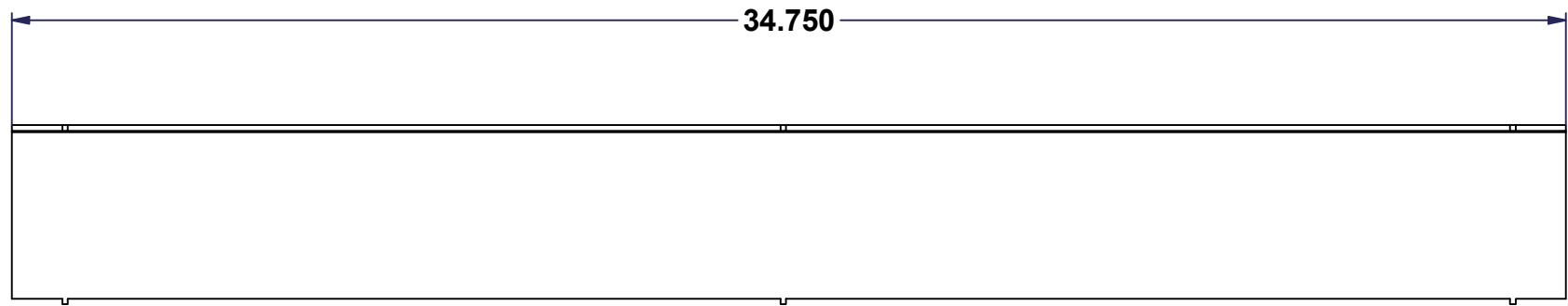
C:\Vault Workspace\Inventor Dwg\Inv-1\1500PE\1500PE040435\1500PE040435.idw

Tolérance ±1/32" sauf spécification contraire

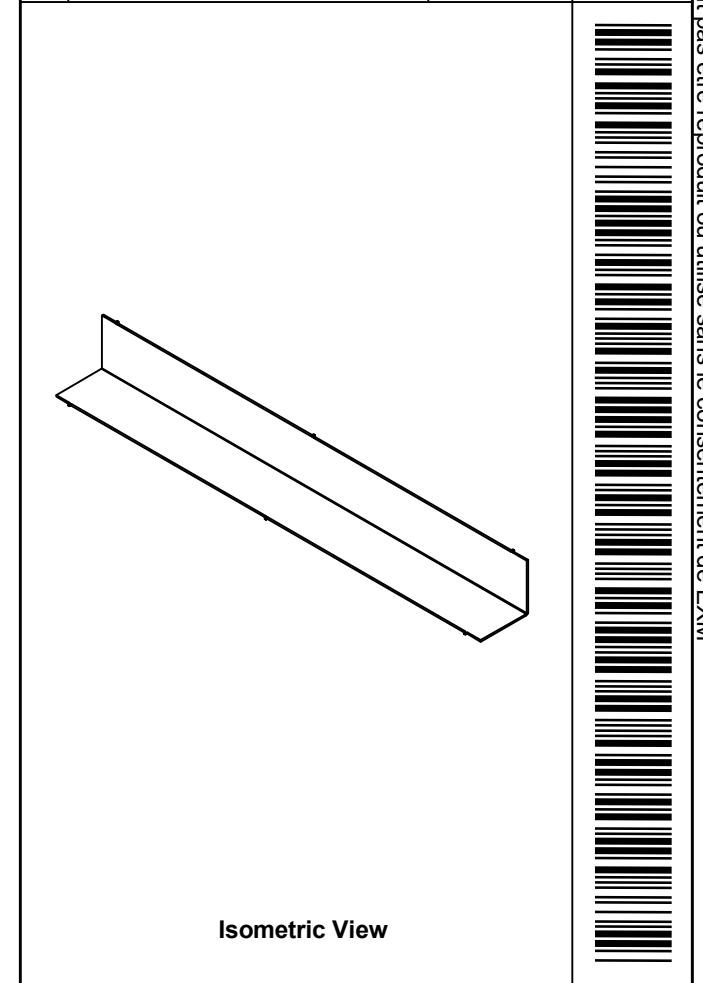
All knockouts are actual size / Les disques défonçables sont grandeur réel
 All dimensions are before paint / Toutes les dimensions sont avant peinture


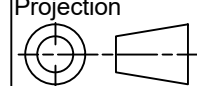
This drawing is confidential and must not be reproduced or used without the consent of EXM

Ce dessin est confidentiel et ne doit pas être reproduit ou utilisé sans le consentement de EXM



No.	Revisions	Date	By/Par



 Tél: (450) 979-4373 Fax: (450) 979-4626 www.exmweb.com		Flatness Aplatissement Max 3.0mm	
		Projection 	
Customer Client		Date	
Drawn By / Dessiné Par: Michelp		Date: 03-Aug-10	
Material / Matière: 11 Ga H.R.P. & O. (3.0mm)			
Color / Couleur: Asa-61 Grey		Finish / Fini: Smooth	
Description: 1500 PE 040435 Part 2		Detail Rev.	
Part Number / Numéro Pièce: 1500PE040435B2-P		Rev.:	3
		0	3