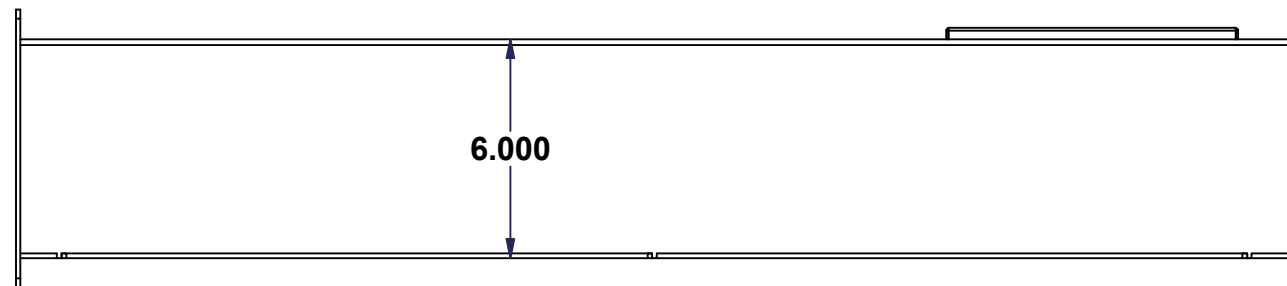
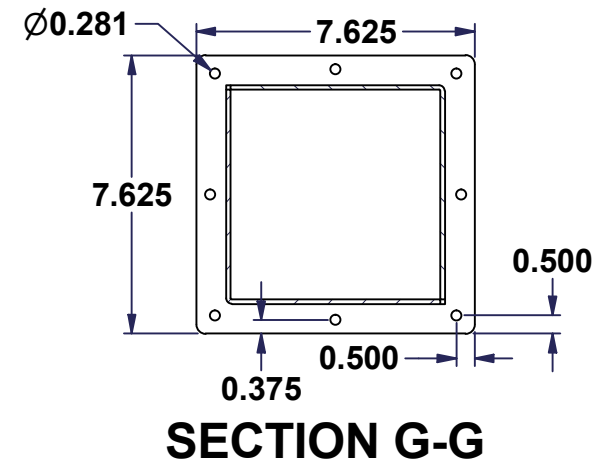
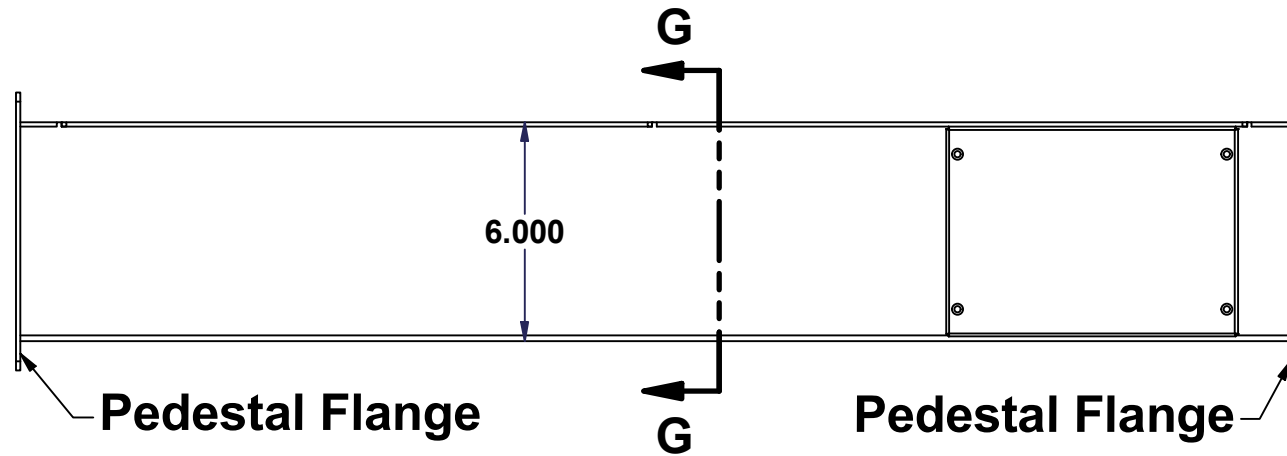


All knockouts are actual size / Les disques défonçables sont grandeur réel
 All dimensions are before paint / Toutes les dimensions sont avant peinture

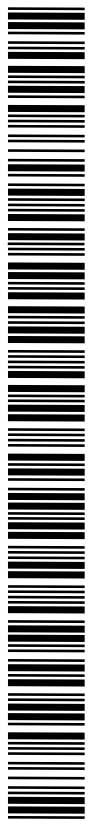
This drawing is confidential and must not be reproduced or used without the consent of EXM

Ce dessin est confidentiel et ne doit pas être reproduit ou utilisé sans le consentement de EXM



No.	Revisions	Date	By/Par

Isometric View



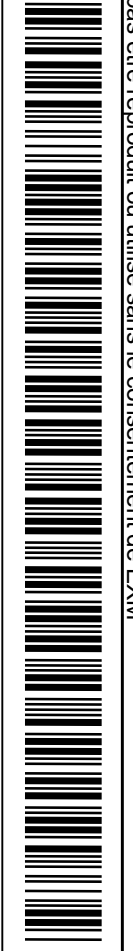
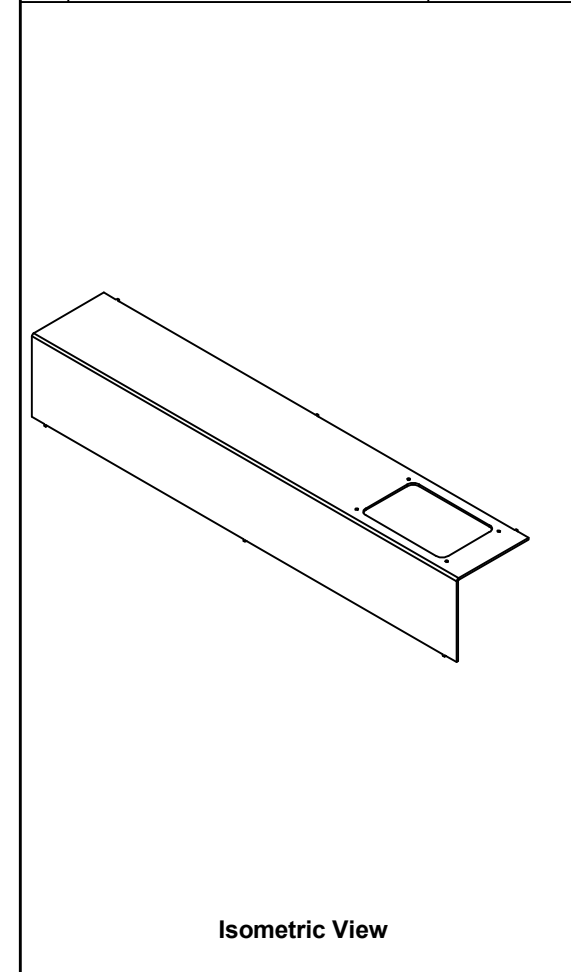
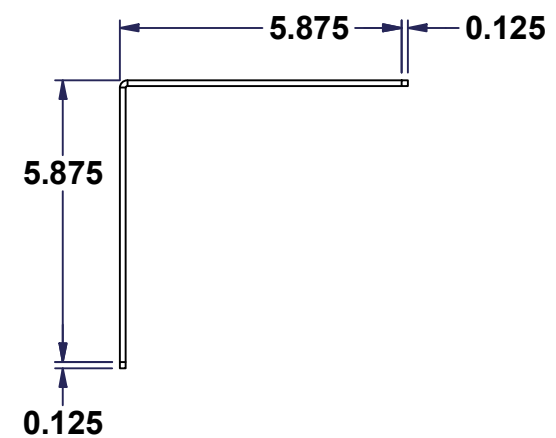
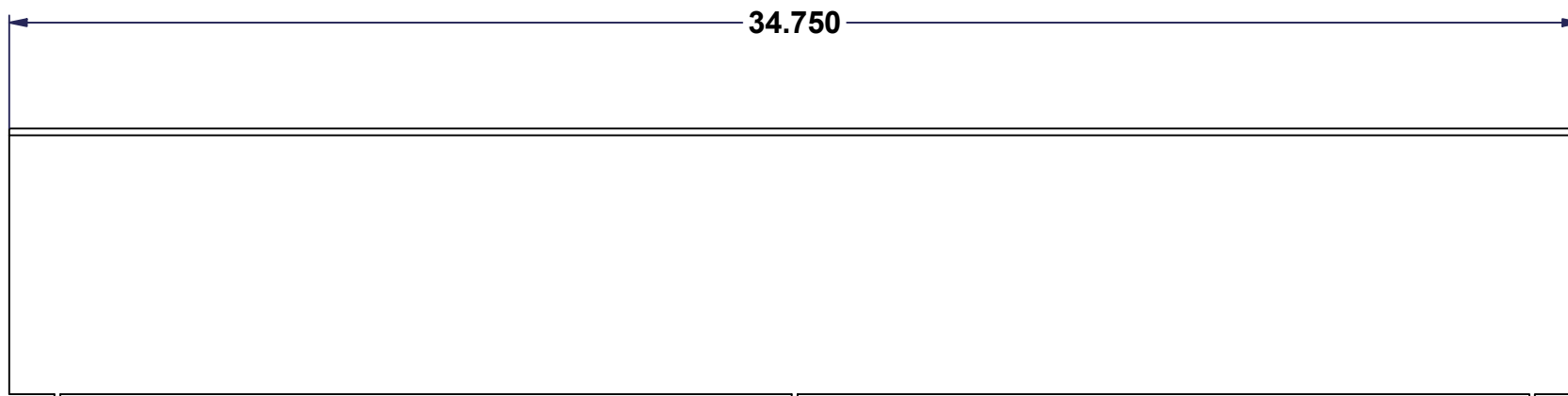
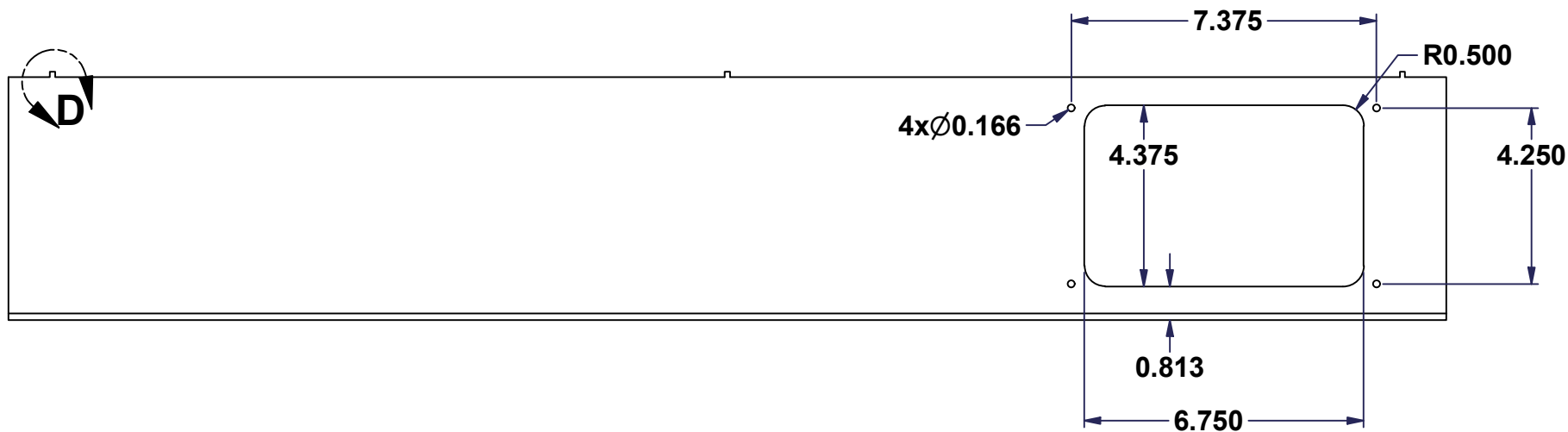
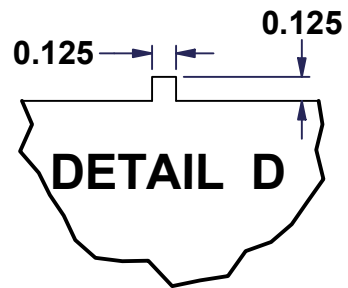
	Tél: (450) 979-4373 Fax: (450) 979-4626 www.exmweb.com	Flatness Aplatissement Max 3.0mm
	Projection	
Customer Client		Date
Drawn By / Dessiné Par: Michelp		Date: 2010/8/3
Material / Matière	See Part List	
Color / Couleur	See Part List	Finish / Fini: See Part List
Description: 1500 PE 060635 Assembly		Detail Rev.
Part Number / Numéro Pièce: 1500PE060635B		Rev. 0


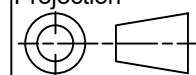
Parts List							
Item	Qty	Part Number	Rev	Description	Material	Color	Finish
1	1	1500PE060635B1-P	0	1500 PE 060635 Part 1	11 Ga H.R.P. & O. (3.0mm)	Asa-61 Grey	Smooth
2	1	1500PE060635B2-P	0	1500 PE 060635 Part 2	11 Ga H.R.P. & O. (3.0mm)	Asa-61 Grey	Smooth
6	2	1500PE0606FL	2	6" x 6" pedestal flange	11 Ga H.R.P. & O. (3.0mm)	Asa-61 Grey	Smooth
7	1	1500PE0606GP	1	1500PE0606 Gland Plate		See Part List	See Part List

All knockouts are actual size / Les disques défonçables sont grandeur réel
 All dimensions are before paint / Toutes les dimensions sont avant peinture

This drawing is confidential and must not be reproduced or used without the consent of EXM

Ce dessin est confidentiel et ne doit pas être reproduit ou utilisé sans le consentement de EXM



 Tél: (450) 979-4373 Fax: (450) 979-4626 www.exmweb.com		Flatness Aplatissement Max 3.0mm
Projection 		
Customer Client	Date	
Drawn By Dessiné Par: Michelp	Date: 2010/8/3	
Material Matière: 11 Ga H.R.P. & O. (3.0mm)		
Color Couleur: Asa-61 Grey	Finish Fini: Smooth	
Description: 1500 PE 060635 Part 1	Detail Rev.	
Part Number Numéro Pièce: 1500PE060635B1-P	Rev. 0	2 3

Tolerance ±1/32" unless otherwise specified

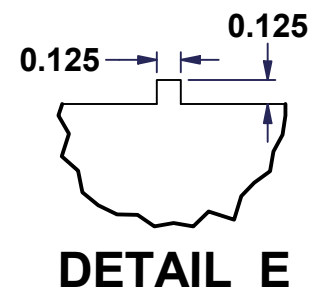
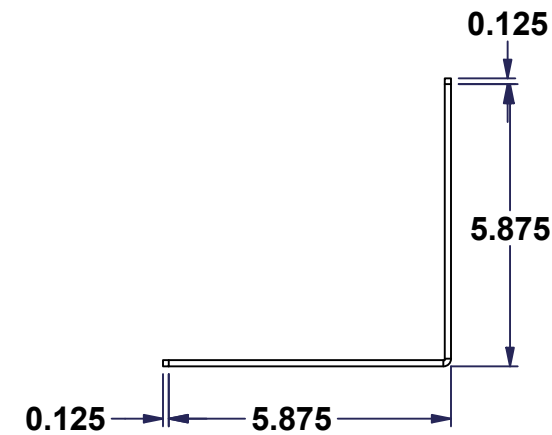
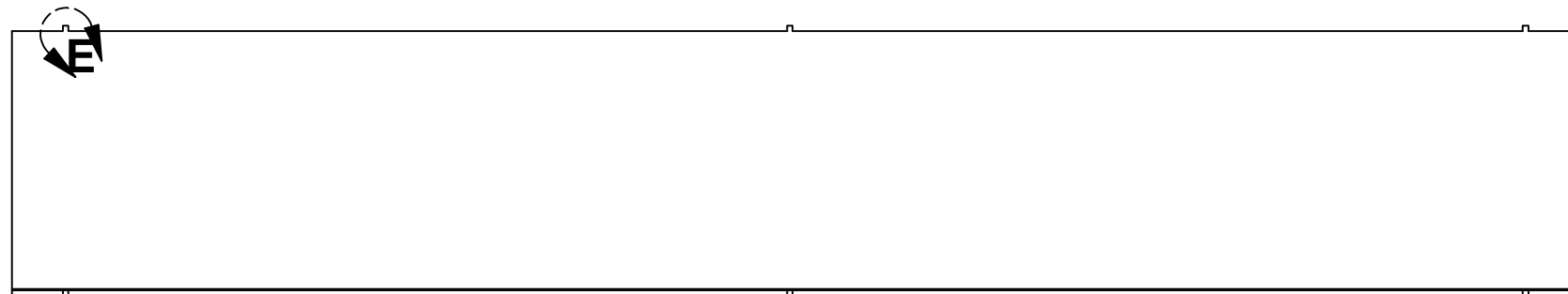
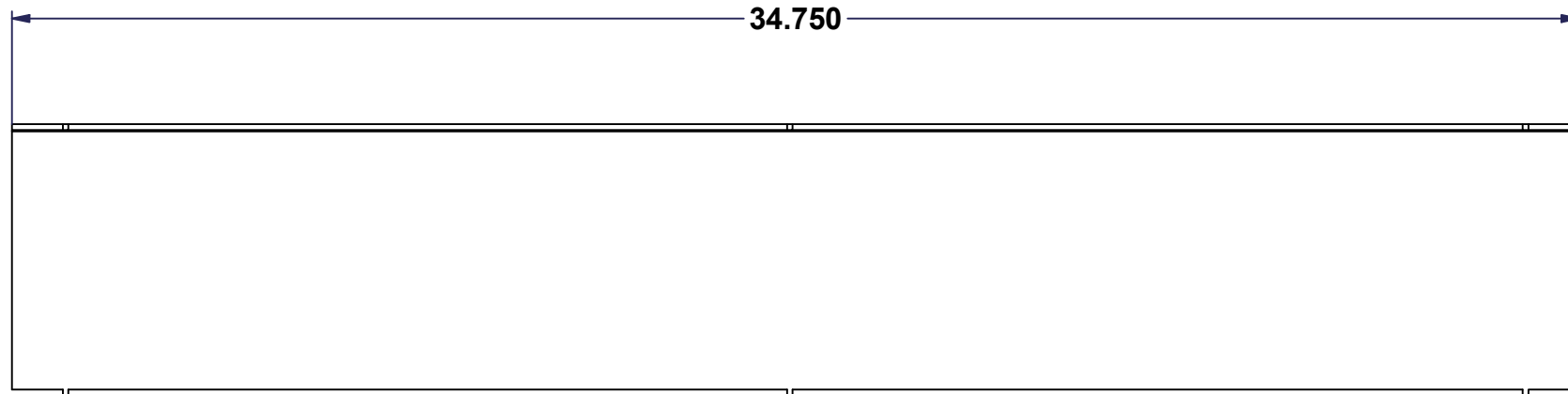
C:\Vault Workspace\Inventor Dwg\Inv-1\1500PE\1500PE060635\1500PE060635.idw

Tolérance ±1/32" sauf spécification contraire

All knockouts are actual size / Les disques défonçables sont grandeur réel
 All dimensions are before paint / Toutes les dimensions sont avant peinture

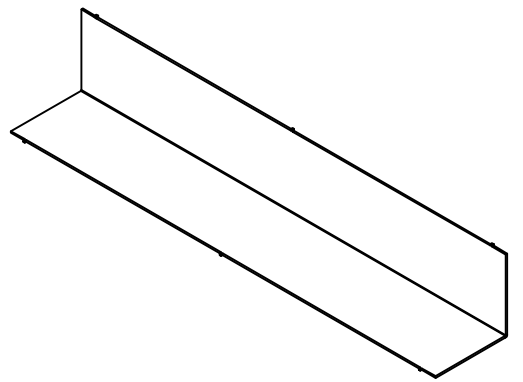
This drawing is confidential and must not be reproduced or used without the consent of EXM

Ce dessin est confidentiel et ne doit pas être reproduit ou utilisé sans le consentement de EXM

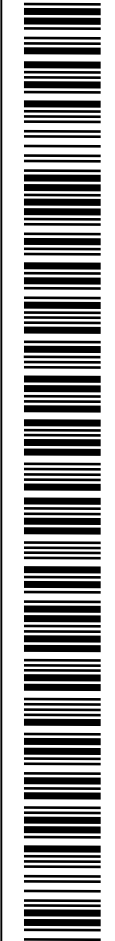



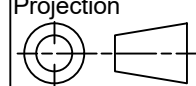
DETAIL E

No.	Revisions	Date	By/Par



Isometric View



 Tél: (450) 979-4373 Fax: (450) 979-4626 www.exmweb.com		Flatness Aplatissement Max 3.0mm	
		Projection 	
Customer Client		Date	
Drawn By Dessiné Par: Michelp		Date: 2010/8/3	
Material Matière: 11 Ga H.R.P. & O. (3.0mm)			
Color Couleur: Asa-61 Grey		Finish Fini: Smooth	
Description 1500 PE 060635 Part 2			Detail Rev.
Part Number Numéro Pièce: 1500PE060635B2-P		Rev. 0	3 / 3