

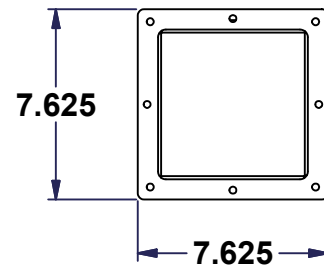
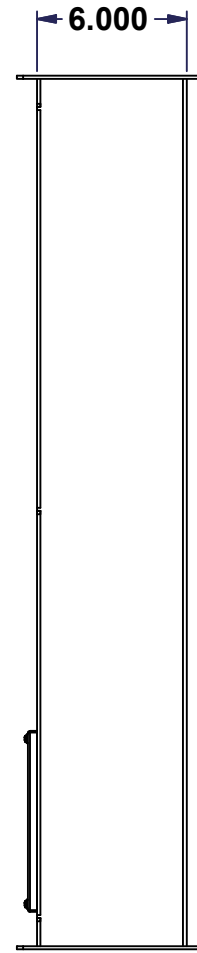
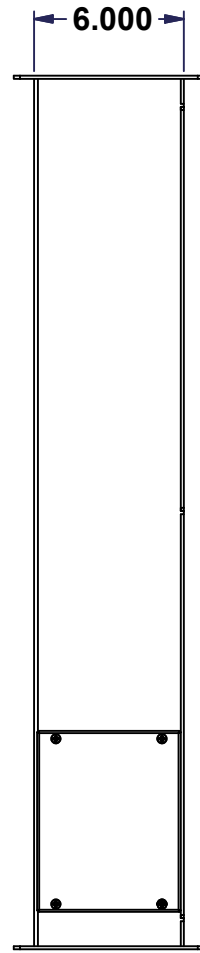
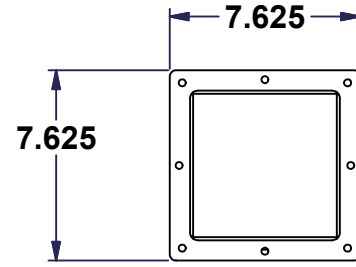
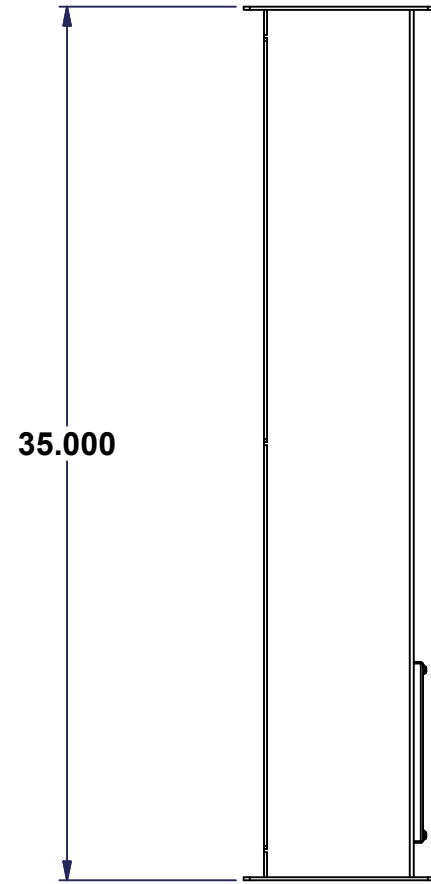
This drawing is confidential and must not be reproduced or used without the consent of EXM

Tolerance ±1/32" unless otherwise specified

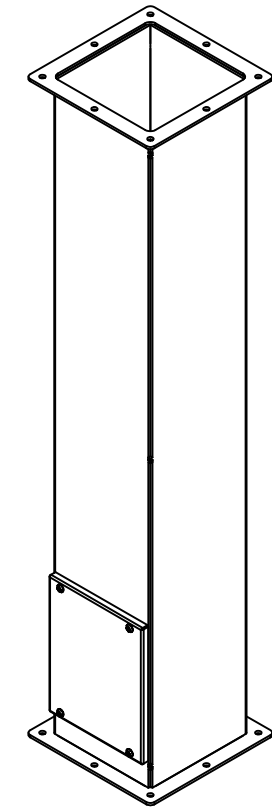
\\VAULT-II\Inventor_Data\Templates\EXM-ANSI-B(Inch).idw

Tolérance ±1/32" sauf spécification contraire

All knockouts are actual size / Les disques défonçables sont grandeur réel
 All dimensions are before paint / Toutes les dimensions sont avant peinture



No.	Revisions	Date	By/Par
1	Change material for 11ga	02/08/2010	MichelP



Isometric View



Ce dessin est confidentiel et ne doit pas être reproduit ou utilisé sans le consentement de EXM



Tél: (450) 979-4373
 Fax: (450) 979-4626
www.exmweb.com

Flatness
 Aplatissement
 Max 3.0mm
 Projection

Customer Client	Date
Drawn By Dessiné Par Patrick Deschenes	Date 04/02/2015
Material Matière	See Part List
Color Couleur	See Part List
Finish Fini	See Part List
Description 1500 PE060635 Assembly	Detail Rev.
Part Number Numéro Pièce 1500PE060635	Rev. 1