

This drawing is confidential and must not be reproduced or used without the consent of EXM

Tolerance $\pm 1/32$ " unless otherwise specified

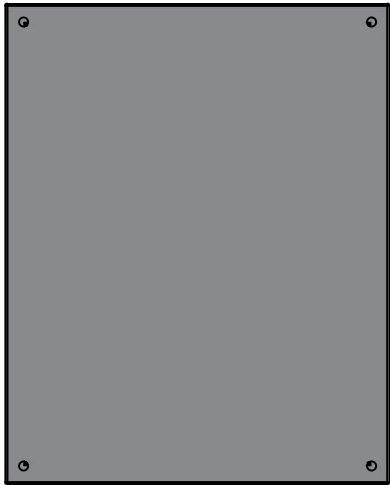
C:\Vault Workspace\Inventor Dwg\BoxCad\Result\5412ESSP2016106\5412ESSP2016106.idw

Tolérance $\pm 1/32$ " sauf spécification contraire

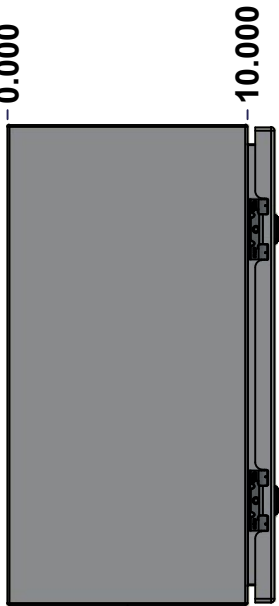
Ce dessin est confidentiel et ne doit pas être reproduit ou utilisé sans le consentement de EXM



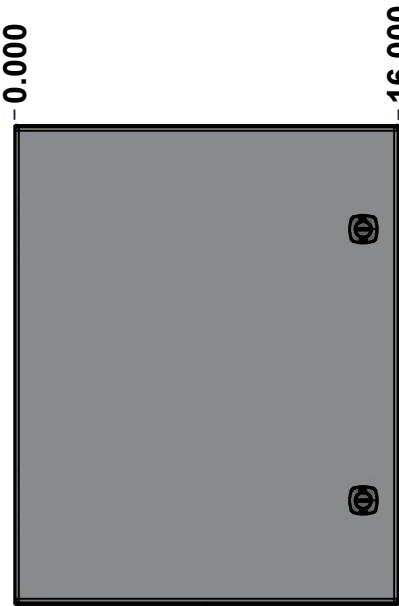
TOP



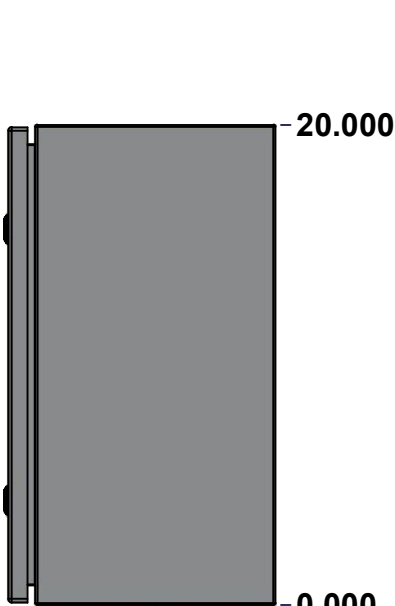
BACK



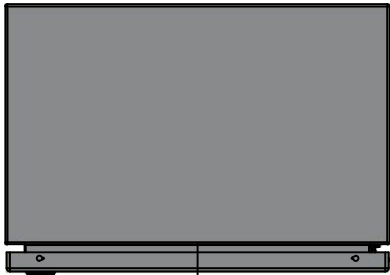
LEFT



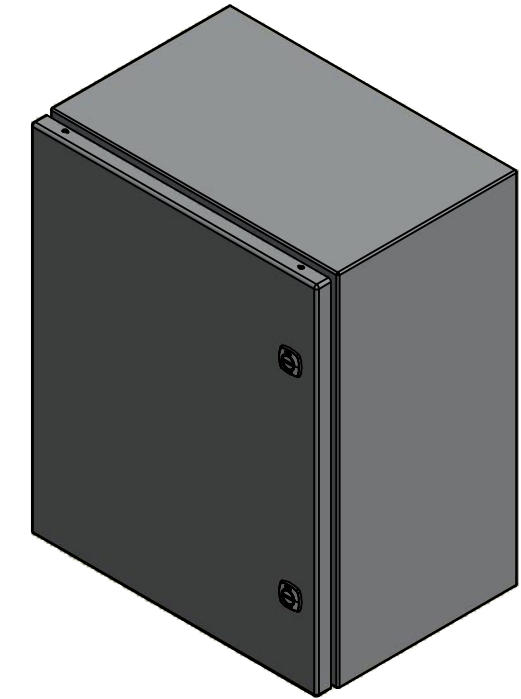
FRONT



RIGHT



BOTTOM



Isometric View

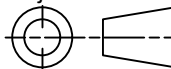


Tél: (450) 979-4373
Fax: (450) 979-4626
www.exmweb.com

Flatness
Aplatissement

Max 3.0mm

Projection



Customer
Client

Date

Drawn By
Dessiné Par

BoxCad: BoxCad

Date 6/30/2022

Material
Matière

16 Ga Stainless Steel 316 (1.4mm)

Color
Couleur

Asa-61 Grey

Finish
Fin

Smooth

Description

5412ESSP 20" x 16" x 10" Assembly

Detail Rev.

Part Number
Numéro Pièce

5412ESSP2016106

Rev.

1
9

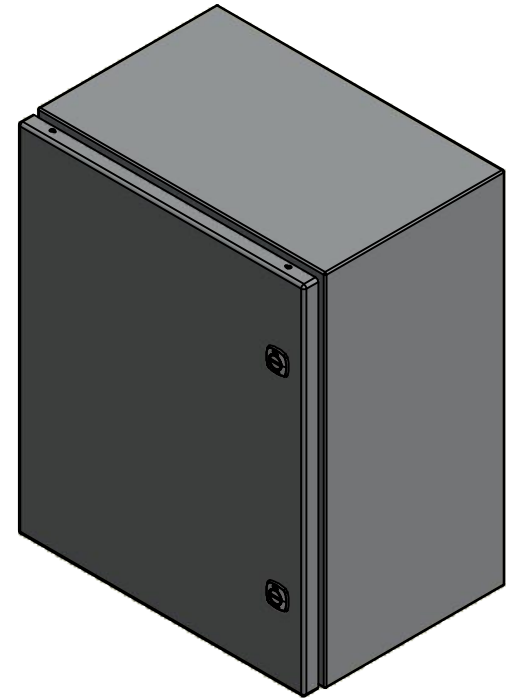
SEE BILL OF MATERIAL ON LAST PAGE

This drawing is confidential and must not be reproduced or used without the consent of EXM

Ce dessin est confidentiel et ne doit pas être reproduit ou utilisé sans le consentement de EXM

No.	Revisions	Date	By/Par

NOTE	
ITEM	DESCRIPTION
1	NEMA 4X Enclosure
2	C/W Standard ground studs on box and cover
3	C/W Standard door stiffener
4	C/W Standard inner panel (Included)
5	C/W Standard inner panel mounting studs



Isometric View

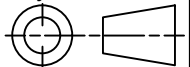


Tél: (450) 979-4373
Fax: (450) 979-4626
www.exmweb.com

Flatness	Aplatissement
----------	---------------

Max 3.0mm

Projection



Customer Client	
--------------------	--

Date

Drawn By	
Dessiné Par	

BoxCad: BoxCad

Date 6/30/2022

Dessine
Material
Matière

16 Ga Stainless Steel 316 (1.4mm)

Color

Asa-61 Grey

Finish

Smooth

Description

5412ESSP 20" x 16" x 10" Assembly

Detail Rev.

Part Number	
Numéro Pièce	

5412ESSP2016106

Rev.

7.	2
----	---

9

1	STK-K-01800	5	5412 ES Accessory Kit
1	880 PP	6	Self Adhesive Print Pocket
1	881 SP2016G	0	881 SP - Inner Panel
1	5412ESSP2016106C	0	5412ESSP 20" x 16" Cover
4	STK-Q-07310	2	Flange Lock Nut M8
4	STK-Q-07610	8	M8 Plastic Spacer 22.2mm
1	5412ESSP2016106B	0	5412ESSP 20" x 16" x 10" Body
2	STK-Q-04051-07	8	M6 x 7mm Stainless Steel Hexagon Socket Head Machine Screw with Nyseal
Qty	Part Number	Rev	Description
Parts List			

This drawing is confidential and must not be reproduced or used without the consent of EXM

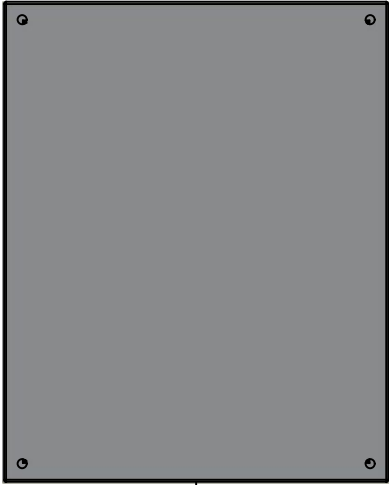
Tolerance ±1/32" unless otherwise specified

C:\Vault Workspace\Inventor Dwg\BoxCad\Result\5412ESSP2016106\5412ESSP2016106.idw

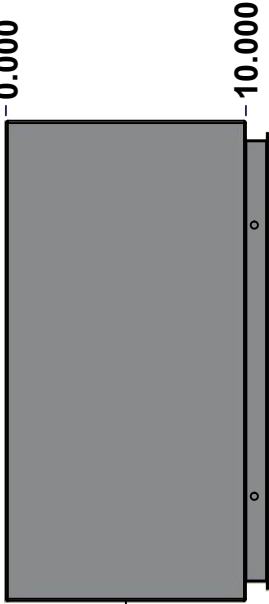
Tolérance ±1/32" sauf spécification contraire



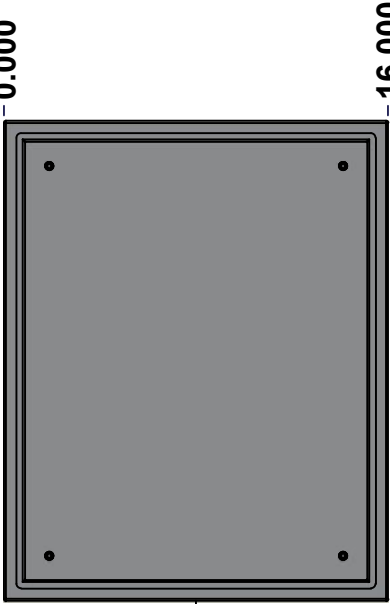
TOP



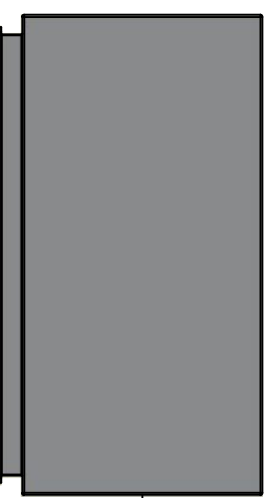
BACK



LEFT



FRONT

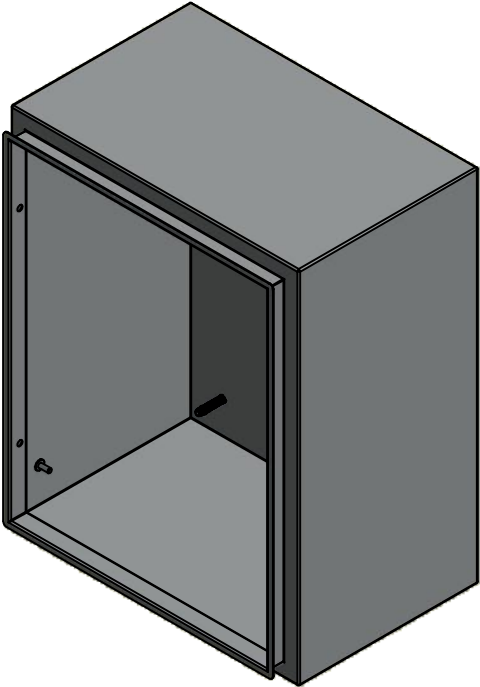


RIGHT



BOTTOM

No.	Revisions	Date	By/Par



Isometric View



Ce dessin est confidentiel et ne doit pas être reproduit ou utilisé sans le consentement de EXM

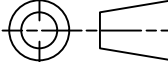


Tél: (450) 979-4373
Fax: (450) 979-4626
www.exmweb.com

Flatness
Aplatissement

Max 3.0mm

Projection



Customer Client		Date	
Drawn By Dessiné Par		Date 6/30/2022	
Material Matière		16 Ga Stainless Steel 316 (1.4mm)	
Color Couleur		Asa-61 Grey	Finish Finis Smooth
Description			Detail Rev.
5412ESSP 20" x 16" x 10" Body			
Part Number Numéro Pièce		Rev.	
5412ESSP2016106B		0	3 9

SEE BILL OF MATERIAL ON LAST PAGE

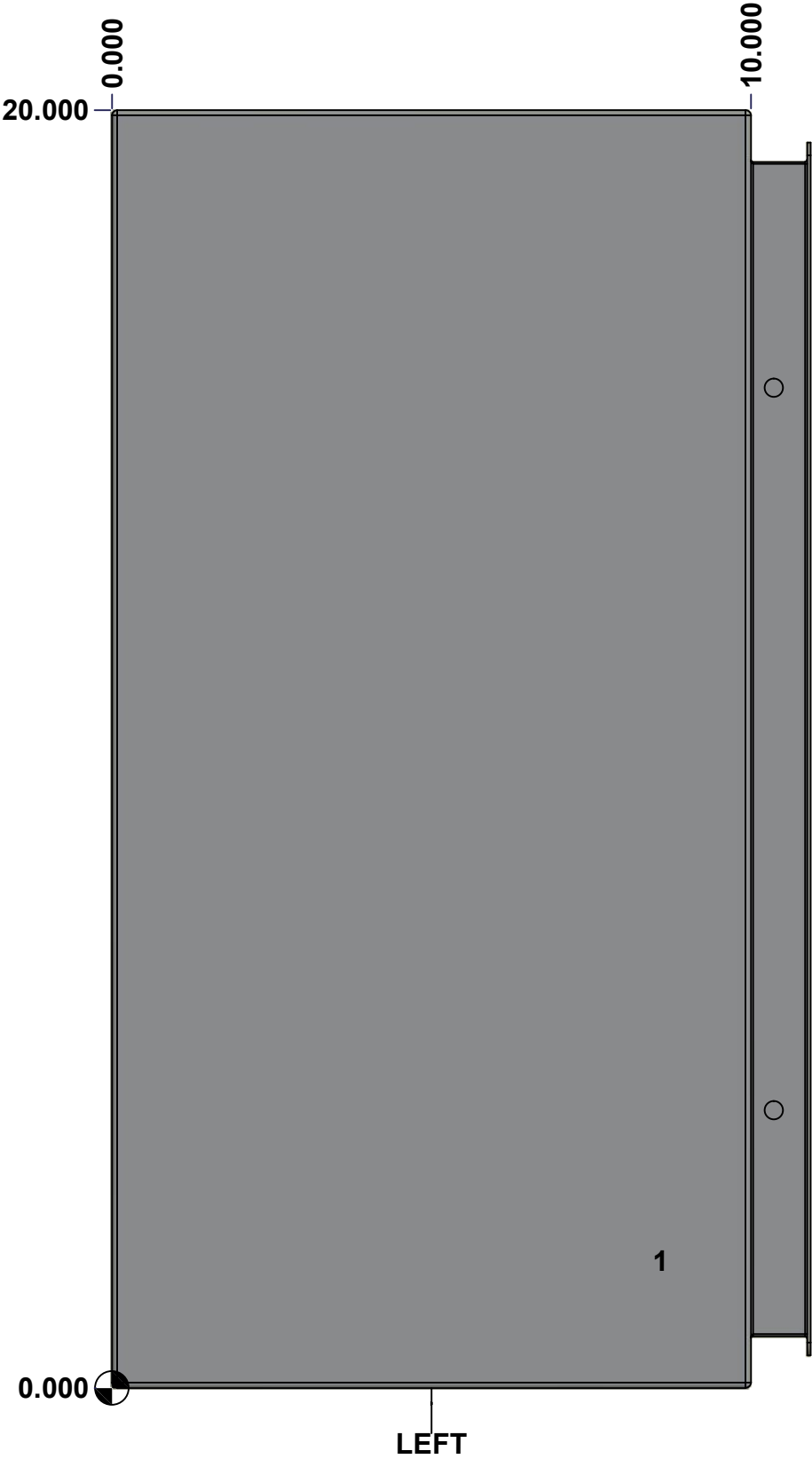
This drawing is confidential and must not be reproduced or used without the consent of EXM

Tolerance ±1/32" unless otherwise specified

C:\Vault Workspace\Inventor Dwg\BoxCad\Result\5412ESSP2016106\5412ESSP2016106.idw

Tolérance ±1/32" sauf spécification contraire

STANDARD FEATURES ARE NOT LISTED IN THIS HOLE TABLE			
HOLE TABLE - LEFT VIEW (CUSTOM FEATURE ONLY)			
CUT-OUT	XDIM	YDIM	DESCRIPTION
1	8.500	2.000	GND STUD M6 x 16mm (Inside)



	Description		Status	
	5412ESSP 20" x 16" x 10" Body		(NULL)	
	Part Number Numéro Pièce		Rev.	
5412ESSP2016106B		0	4	9

Ce dessin est confidentiel et ne doit pas être reproduit ou utilisé sans le consentement de EXM

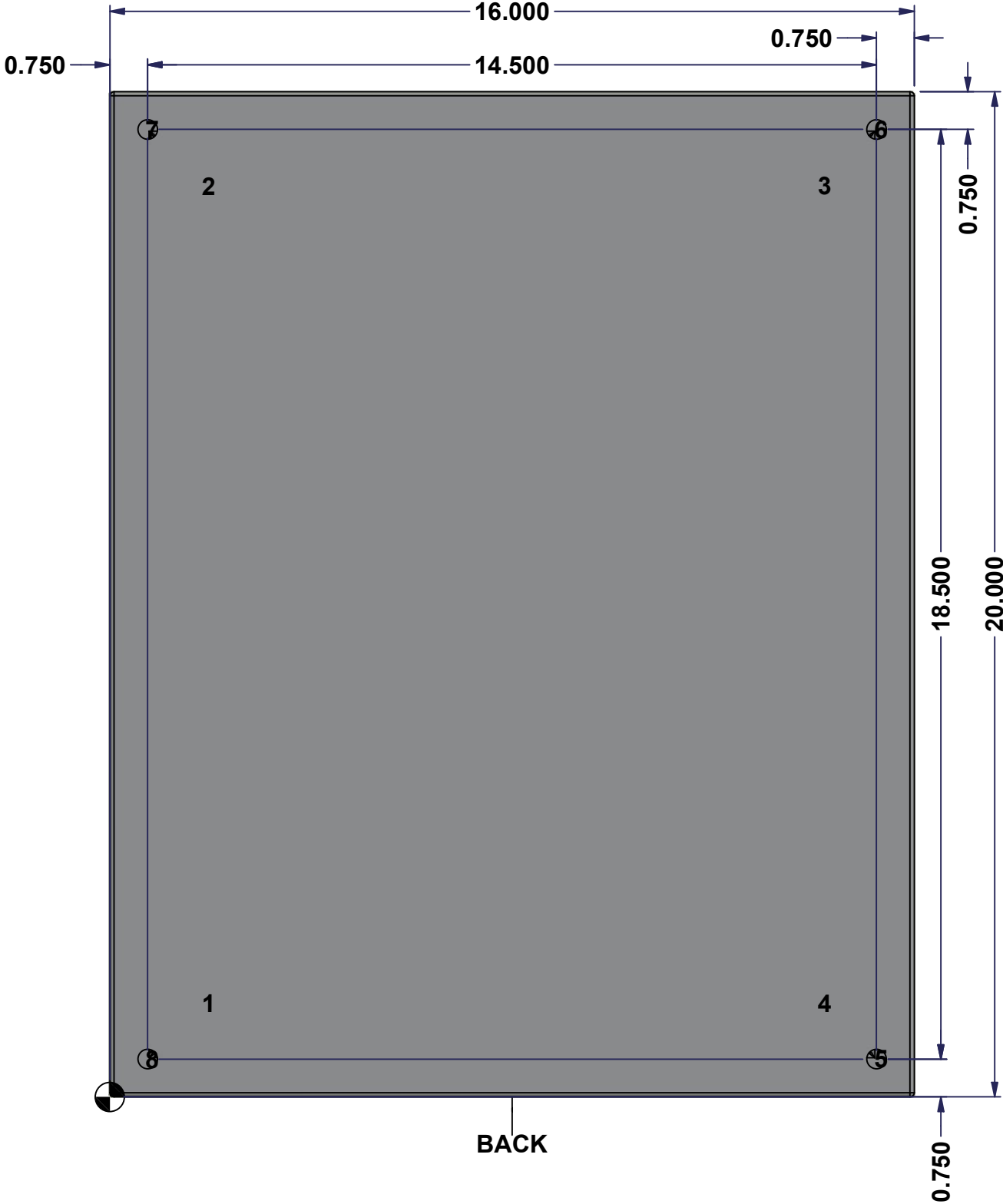
This drawing is confidential and must not be reproduced or used without the consent of EXM

Tolerance ±1/32" unless otherwise specified

C:\Vault Workspace\Inventor Dwg\BoxCad\Result\5412ESSP2016106\5412ESSP2016106.idw

Tolérance ±1/32" sauf spécification contraire

STANDARD FEATURES ARE NOT LISTED IN THIS HOLE TABLE			
HOLE TABLE - BACK VIEW (CUSTOM FEATURE ONLY)			
CUT-OUT	XDIM	YDIM	DESCRIPTION
1	1.875	1.875	IP STUD M8 x 35mm (Inside)
2	1.875	18.125	IP STUD M8 x 35mm (Inside)
3	14.125	18.125	IP STUD M8 x 35mm (Inside)
4	14.125	1.875	IP STUD M8 x 35mm (Inside)
-----	-----	-----	-----
5	15.250	0.750	RND Ø0.390
6	15.250	19.250	RND Ø0.390
7	0.750	19.250	RND Ø0.390
8	0.750	0.750	RND Ø0.390



Ce dessin est confidentiel et ne doit pas être reproduit ou utilisé sans le consentement de EXM

	Description	Status	
	5412ESSP 20" x 16" x 10" Body	(NULL)	
	Part Number	Rev.	5
	Numéro Pièce	0	9
5412ESSP2016106B			

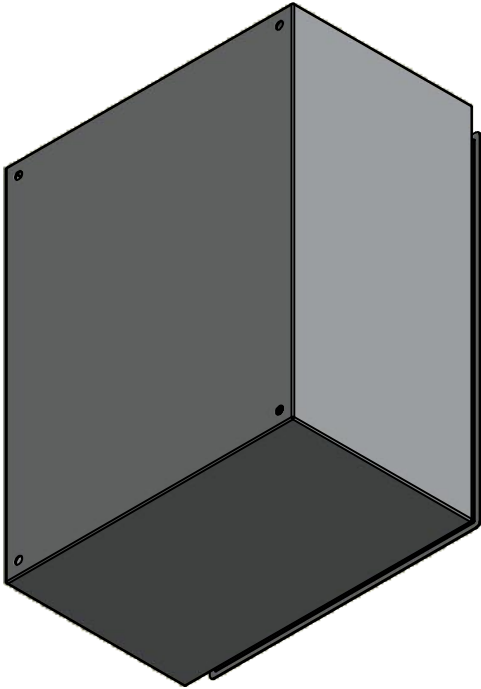
This drawing is confidential and must not be reproduced or used without the consent of EXM

Tolerance ±1/32" unless otherwise specified


C:\Vault Workspace\Inventor Dwg\BoxCad\Result\5412ESSP2016106\5412ESSP2016106.idw


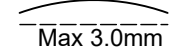
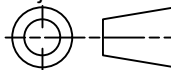
Tolérance ±1/32" sauf spécification contraire

No.	Revisions	Date	By/Par



Isometric View



 <div>Tél: (450) 979-4373 Fax: (450) 979-4626 www.exmweb.com</div>		Flatness Aplatissement  Max 3.0mm	
		Projection 	
Customer Client		Date	
Drawn By Dessiné Par		Date 6/30/2022	
Material Matière		16 Ga Stainless Steel 316 (1.4mm)	
Color Couleur		Asa-61 Grey	Finish Fini Smooth
Description			Detail Rev.
5412ESSP 20" x 16" x 10" Body			
Part Number Numéro Pièce		Rev.	6
5412ESSP2016106B		0	9

1	STK-Q-16085	0	Ground Stud M6 x 16mm Stainless Steel
1	STK-P-02400S	0	Powder Paint (Asa-61 Grey / Smooth)
4	STK-Q-16020	1	Stud M8 x 35mm Stainless Steel
1	5412ESSP2016106B-P	0	5412ESSP 20" x 16" x 10" Body Part
Qty	Part Number	Rev	Description
Parts List			

Ce dessin est confidentiel et ne doit pas être reproduit ou utilisé sans le consentement de EXM

This drawing is confidential and must not be reproduced or used without the consent of EXM

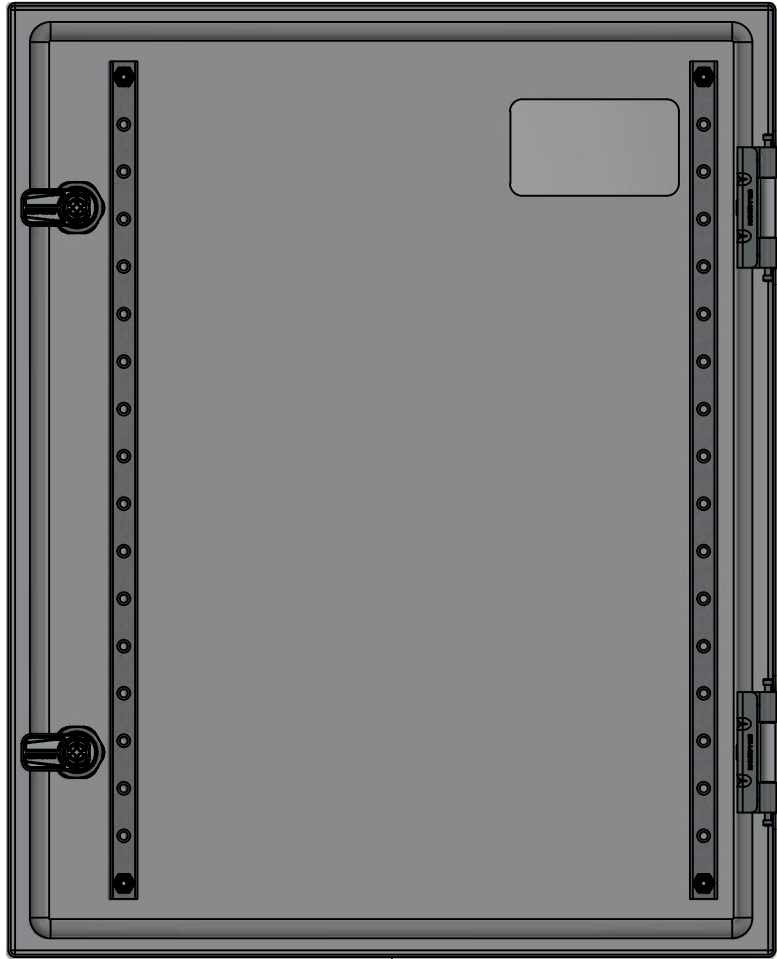
Tolerance $\pm 1/32$ " unless otherwise specified

C:\Vault Workspace\Inventor Dwg\BoxCad\Result\5412ESSP2016106\5412ESSP2016106.idw

Tolérance $\pm 1/32$ " sauf spécification contraire



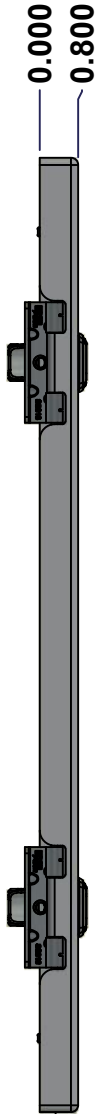
TOP



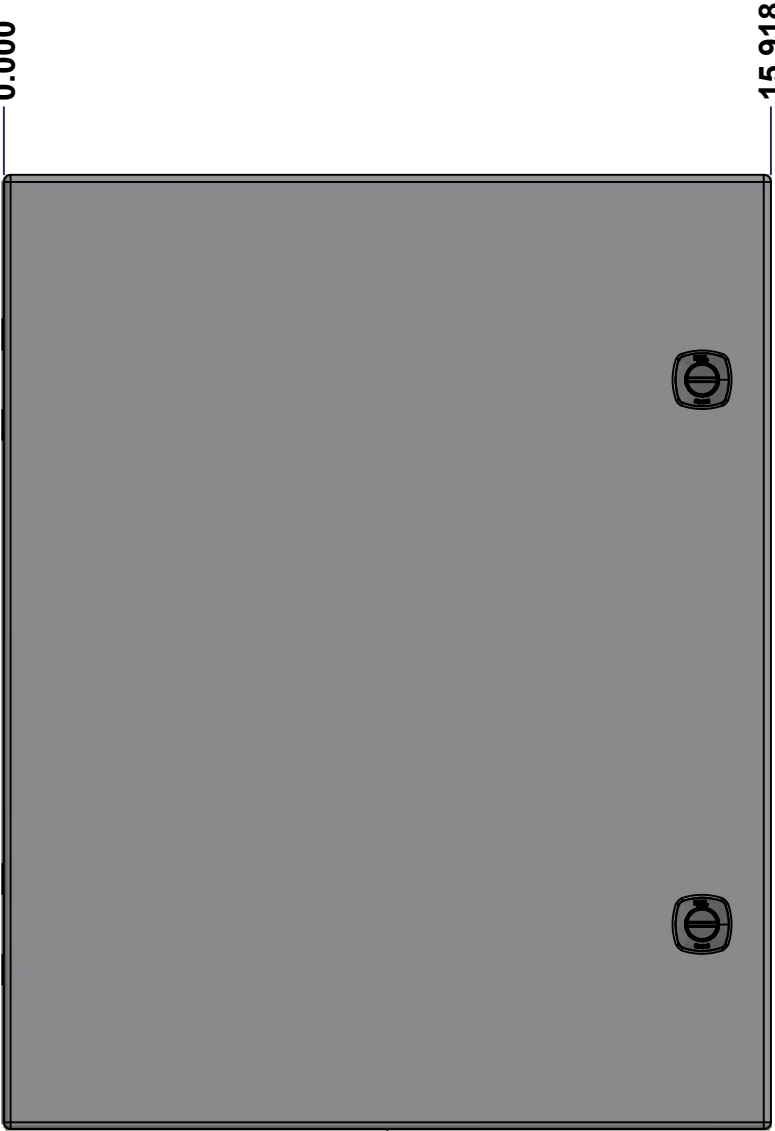
BACK



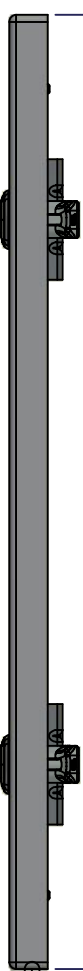
BOTTOM



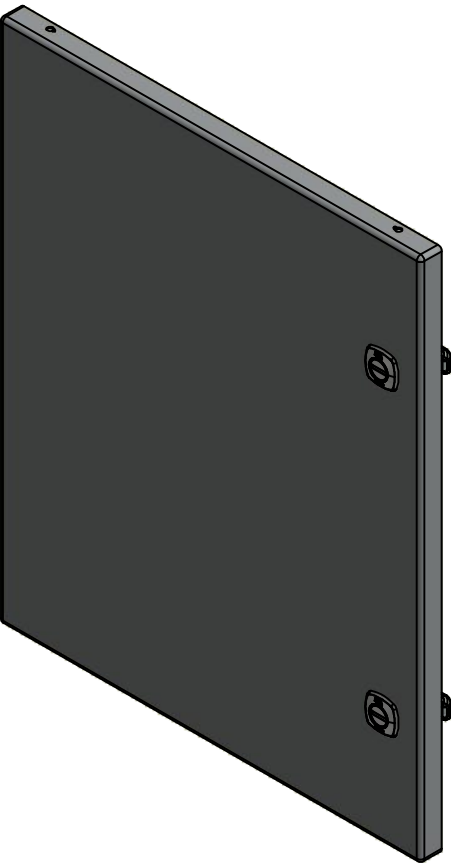
LEFT



FRONT



RIGHT

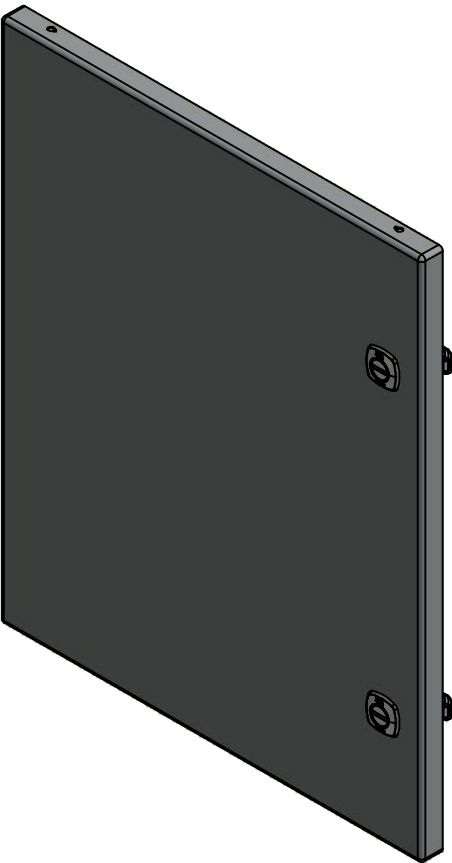
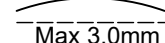



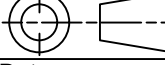
Isometric View



Ce dessin est confidentiel et ne doit pas être reproduit ou utilisé sans le consentement de EXM

No.	Revisions	Date	By/Par

		
Isometric View		

		Flatness Aplatissement	
		Max 3.0mm	
Tél: (450) 979-4373 Fax: (450) 979-4626 www.exmweb.com		Projection 	
Customer Client		Date	
Drawn By Dessiné Par BoxCad: BoxCad		Date 6/30/2022	
Material Matière 16 Ga Stainless Steel 316 (1.4mm)			
Color Couleur Asa-61 Grey		Finish Fini Smooth	
Description 5412ESSP 20" x 16" Cover		Detail Rev.	
Part Number Numéro Pièce 5412ESSP2016106C		Rev. 0	7 9

SEE BILL OF MATERIAL ON LAST PAGE

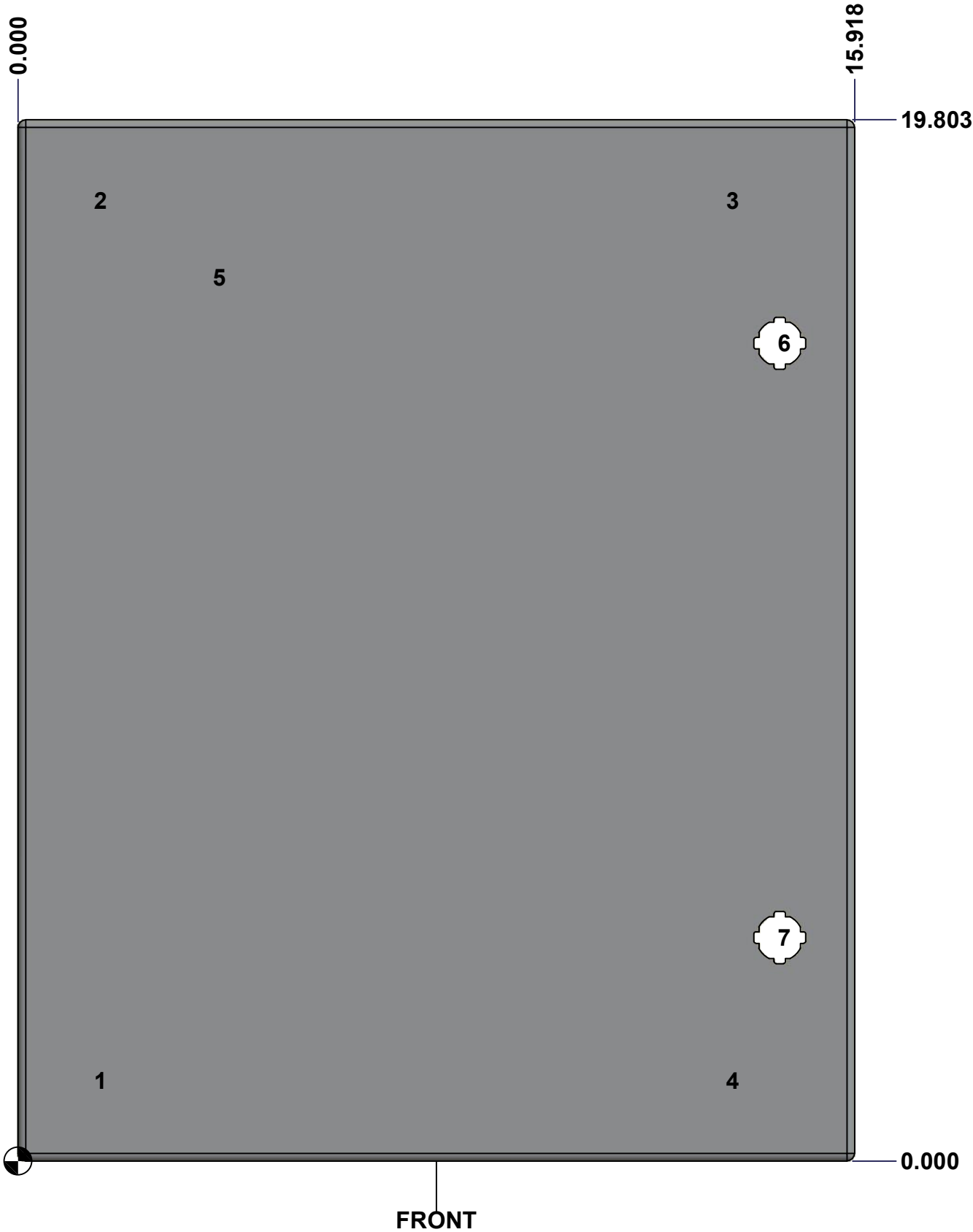
This drawing is confidential and must not be reproduced or used without the consent of EXM

Tolerance ±1/32" unless otherwise specified

C:\Vault Workspace\Inventor Dwg\BoxCad\Result\5412ESSP2016106\5412ESSP2016106.idw

Tolérance ±1/32" sauf spécification contraire

STANDARD FEATURES ARE NOT LISTED IN THIS HOLE TABLE			
HOLE TABLE - FRONT VIEW (CUSTOM FEATURE ONLY)			
CUT-OUT	XDIM	YDIM	DESCRIPTION
1	1.486	1.535	STUD M6 x 18mm (Inside)
2	1.486	18.268	STUD M6 x 18mm (Inside)
3	13.517	18.268	STUD M6 x 18mm (Inside)
4	13.517	1.535	STUD M6 x 18mm (Inside)
-----	-----	-----	-----
5	3.750	16.803	LABEL_EXM (Inside)
6	14.494	15.553	LOCK 880 SCQ4-SLSS6 @ 0.0°
7	14.494	4.250	LOCK 880 SCQ4-SLSS6 @ 0.0°



FRONT

	Description 5412ESSP 20" x 16" Cover	Status (NULL)	
	Part Number Numéro Pièce 5412ESSP2016106C	Rev. 0	8 9

Ce dessin est confidentiel et ne doit pas être reproduit ou utilisé sans le consentement de EXM

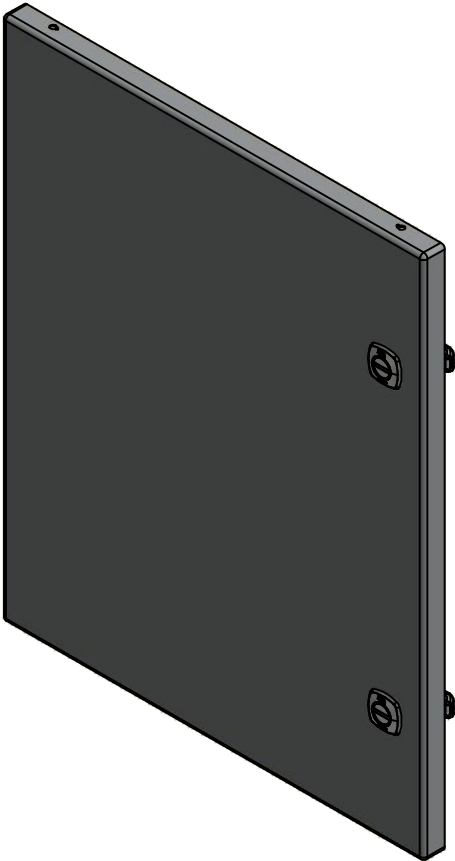
This drawing is confidential and must not be reproduced or used without the consent of EXM

Tolerance ±1/32" unless otherwise specified


C:\Vault Workspace\Inventor Dwg\BoxCad\Result\5412ESSP2016106\5412ESSP2016106.idw


Tolérance ±1/32" sauf spécification contraire

No.	Revisions	Date	By/Par

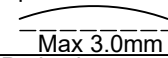
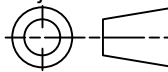


Isometric View





Tél: (450) 979-4373
Fax: (450) 979-4626
www.exmweb.com

Flatness
Aplatissement

Max 3.0mm
Projection


Customer
Client

Date

Drawn By
Dessiné Par

BoxCad: BoxCad

Date 6/30/2022

Material
Matière

16 Ga Stainless Steel 316 (1.4mm)

Color
Couleur

Asa-61 Grey

Finish
Fin

Smooth

Description

5412ESSP 20" x 16" Cover

Detail Rev.

Part Number
Numéro Pièce

5412ESSP2016106C

Rev.

0

9

9

1	STK-S-00100	0	3.5" x 2" Silver Milar Flexcon Sticker
1	STK-P-02400S	0	Powder Paint (Asa-61 Grey / Smooth)
2	STK-Q-46020-20	5	5412 ES Vertical Door Stiffener 20"
4	STK-Q-16070	1	Stud M6 x 18mm Stainless steel
1	5412ESSP2016106G	0	5412ESSP 20" x 16" Cover Gasket Part
1	5412ESSP2016106C-P	0	5412ESSP 20" x 16" Cover Part
2	STK-A-33016	0	5412 ESS Bended Hinge (Body Part)
2	880 SCQ4-SLSS6	7	5412 ESS 1/4 Turn Lock
4	STK-Q-07220	1	M6 Nylon Insert Lock Nut
Qty	Part Name	Rev	Description
Parts List			

Ce dessin est confidentiel et ne doit pas être reproduit ou utilisé sans le consentement de EXM

This drawing is confidential and must not be reproduced or used without the consent of EXM

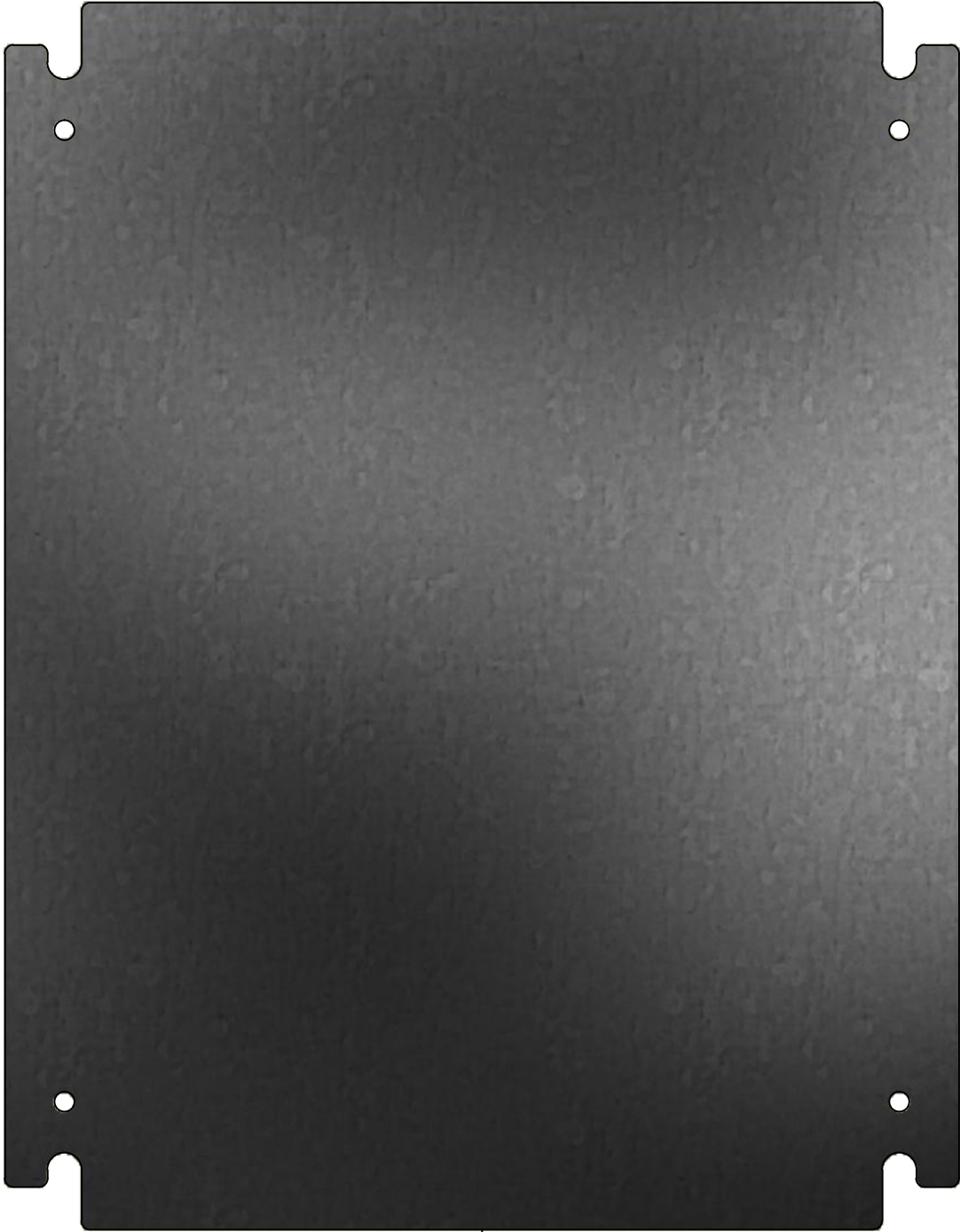
Tolerance ±1/32" unless otherwise specified

C:\Vault Workspace\Inventor Dwg\Inv-8\881SP\881SP2016G.idw

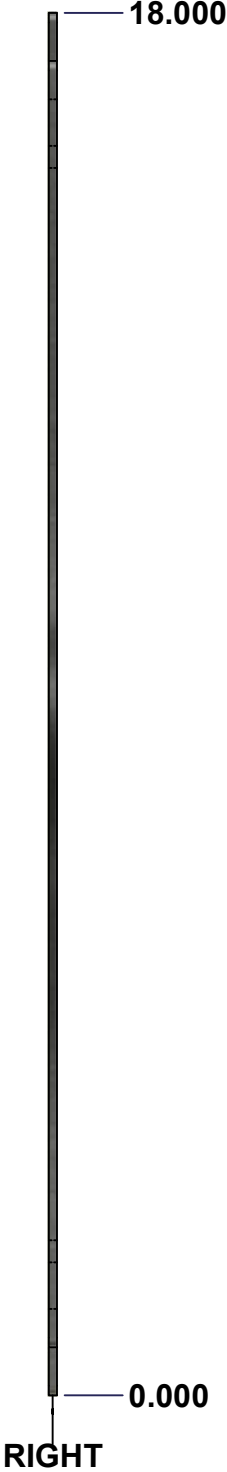
Tolérance ±1/32" sauf spécification contraire



TOP



FRONT




RIGHT

No.	Revisions	Date	By/Par

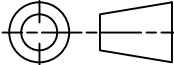


Isometric View





Tél: (450) 979-4373
Fax: (450) 979-4626
www.exmweb.com

Flatness
Aplatissement
Max 3.0mm
Projection


Customer Client		Date	
Drawn By Dessiné Par BoxCad		Date 1/23/2007	
Material Matière		See Part List	
Color Couleur	See Part List	Finish Fini	See Part List
Description 881 SP - Inner Panel			Detail Rev.
Part Number Numéro Pièce 881 SP2016G			Rev. 0
			1 2

1	881 SP2016G-P	0	881 SP - Inner Panel Part	12 Ga Galvanized	Unpainted	Galvanized
Qty	Part Number	Rev	Description	Material	Color	Finish
Parts List						

Ce dessin est confidentiel et ne doit pas être reproduit ou utilisé sans le consentement de EXM

This drawing is confidential and must not be reproduced or used without the consent of EXM

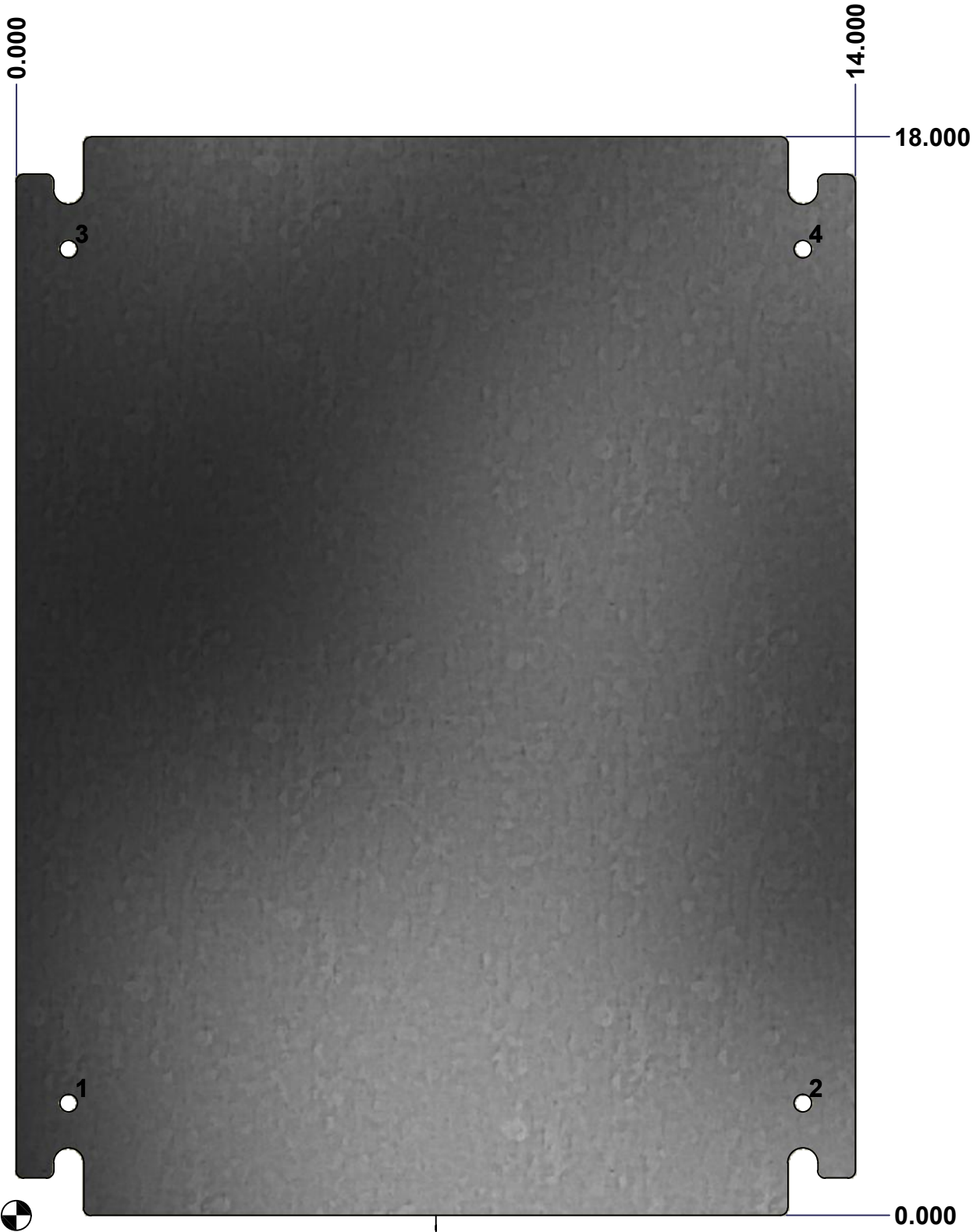
Tolerance ±1/32" unless otherwise specified

C:\Vault Workspace\Inventor Dwg\Inv-8\881SP\881SP2016G.idw

Tolérance ±1/32" sauf spécification contraire

Table 1			FRONT VIEW
CUT-OUT	XDIM	YDIM	DESCRIPTION
1	0.875	1.875	GROUND HOLE (RND Ø0.290)
2	13.125	1.875	GROUND HOLE (RND Ø0.290)
3	0.875	16.125	GROUND HOLE (RND Ø0.290)
4	13.125	16.125	GROUND HOLE (RND Ø0.290)

All knockouts are actual size / Les disques défonçables sont grandeur réel



FRONT

No.	Revisions	Date	By/Par



Isometric View

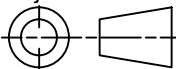


Tél: (450) 979-4373
Fax: (450) 979-4626
www.exmweb.com

Flatness
Aplatissement

Max 3.0mm

Projection



Customer Client		Date	
Drawn By Dessiné Par BoxCad		Date 1/23/2007	
Material Matière		See Part List	
Color Couleur		Finish Fini See Part List	
Description 881 SP - Inner Panel			Detail Rev.
Part Number Numéro Pièce		Rev.	2
881 SP2016G		0	2

Ce dessin est confidentiel et ne doit pas être reproduit ou utilisé sans le consentement de EXM